

EXTRAORDINARY
MOTORCYCLE
PRODUCTS



PERFORMANCE MACHINE



YOU HOLD IN YOUR HANDS THE LATEST EDITION OF THE AWARD-WINNING PERFORMANCE MACHINE CATALOG. WITHIN THESE PAGES WE'LL TEMPT YOU WITH THE QUALITY PRODUCTS MOTORCYCLE ENTHUSIASTS HAVE COME TO EXPECT OVER THE PAST FOUR DECADES AND PRESENT TO YOU THE TOOLS TO CUSTOMIZE YOUR OWN RIDE AND BE ONLY ONE.

WE KNOW THAT YOU'RE UNIQUE AND THE MOTORCYCLE(S) IN YOUR LIFE ARE A STATEMENT OF INDIVIDUALISM. WHEN YOU CUSTOMIZE YOUR RIDE, YOU BUILD CHARACTER. WE WANT TO SHOW YOU HOW TO ASSEMBLE YOUR CHARACTER WITH PM'S CONFIDENCE INSPIRING PERFORMANCE PARTS TO GO BEYOND CUSTOM, BEYOND THE STATUS QUO - TO BE ONLY ONE.



PERFORMANCE MACHINE

OVER FOUR DECADES & FORGING FORWARD

INDIVIDUALISM COMES STANDARD. CHARACTER IS BUILT. ICONS ARE REMEMBERED.
BE ONLY ONE.

THE EXTRAORDINARY

WHEEL DESIGNS	4
BIG WHEELS	26
WHEEL PRICING	28
COMPONENT PRICING	29
DESIGN FAMILIES	30
CUSTOM FINISH SHOP	31
PM FOR INDIAN®	32
MADE FOR VICTORY®	33
BUILD SHOP	34
PM GARAGE	35
ACCESSORIES	36
AIR CLEANERS	52
BRAKES	58
CONTROLS	64
PRIMARY DRIVE	68
PHATAIL KIT	69
TRIKE WHEELS & BRAKES	70
REPLACEMENT PARTS	71
BE ONLY ONE	72

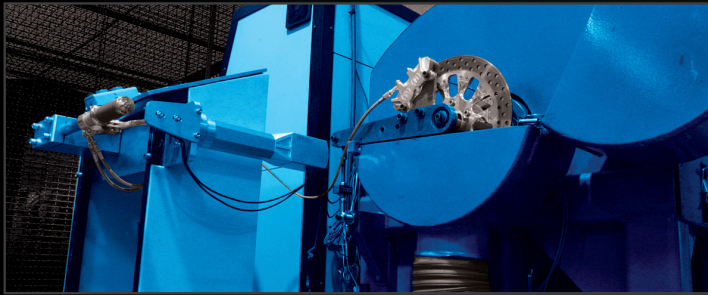


HARLEY-DAVIDSON® IS A REGISTERED TRADEMARK OF THE HARLEY-DAVIDSON MOTOR COMPANY INC., MILWAUKEE, WI. INDIAN® IS A REGISTERED TRADEMARK OF POLARIS INDUSTRIES, WOODLAND HILLS, CA. VICTORY MOTORCYCLES® IS A REGISTERED TRADEMARK OF POLARIS INDUSTRIES, MEDINA, MN. PERFORMANCE MACHINE IS NOT AFFILIATED WITH HARLEY-DAVIDSON, INDIAN, VICTORY MOTORCYCLES OR ANY OTHER MOTORCYCLE MANUFACTURER. CHECK FOR NEW PRODUCTS, UPDATES, AND TECHNICAL INFORMATION AT PERFORMANCEMACHINE.COM.

CAMPAIGN CREATIVE AND DESIGN BY ANDY MEADORS BRANDING. LIFESTYLE PHOTOGRAPHY BY SHANNON BROOKE IMAGERY. PRINTED BY CENVEO, LOS ANGELES. ©2015 PERFORMANCE MACHINE. DESIGNED AND MADE IN THE USA.



★ BRAKE TEST



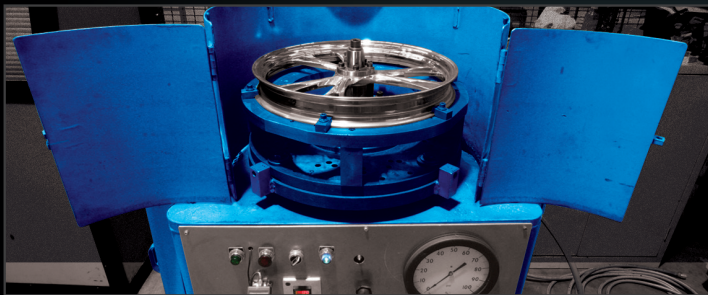
STOCK V-TWIN MOTORCYCLES ARE COMING OUT OF THE FACTORY WITH MORE HORSEPOWER ON TAP THAN EVER. RARELY DOES IT STAY THAT WAY, THOUGH AND THE BULK OF THESE BIKES ARE UPGRADED WITH HIGH PERFORMANCE PIPES, CAMS, AND CARBS AND OTHER GO FAST PARTS. IN AN EFFORT TO INCREASE PERFORMANCE RIDERS OVERLOOK THE VERY SYSTEM DESIGNED TO BRING IT TO A STOP. IN-HOUSE DYNO TESTING ENSURES THAT PM CALIPERS MAINTAIN PROPER PRESSURE, DO NOT FLEX, PROVIDE SUPERIOR STOPPING POWER, AND ALL FUNCTIONING PARTS HOLD UP TO DAILY USE TO BRING YOUR MOTORCYCLE TO A STOP IN A SAFE DISTANCE.

TESTING & QUALITY



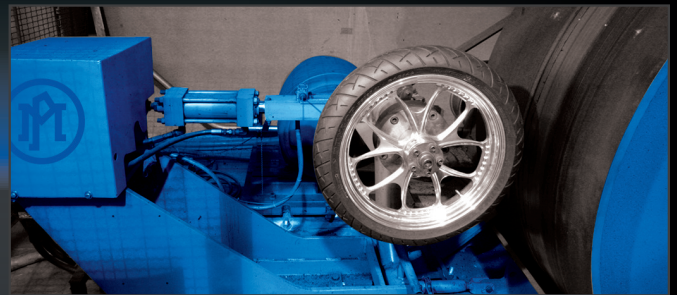
EACH PERFORMANCE MACHINE WHEEL AND BRAKE SYSTEM IS DESIGNED AND ENGINEERED TO SPECIFIC STANDARDS AND THOROUGHLY TESTED. STARTING WITH COMPUTER SIMULATED STRESS ANALYSIS, OUR ENGINEERS ASSESS EACH DESIGN. BUT WE DON'T STOP THERE. WE QUANTIFY OUR FINDINGS WITH DATA FROM PHYSICAL TESTING IN OUR SOPHISTICATED IN-HOUSE TEST DEPARTMENT. PM TESTS TO STRICT WORLD WIDE STANDARDS SUCH AS JASO AND TUV.

① CORNERING



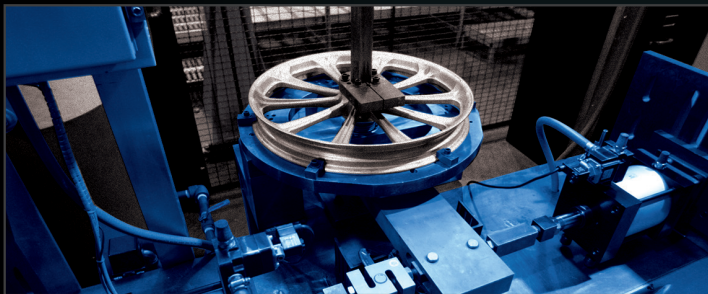
PERFORMANCE MACHINE'S PHYSICAL TESTING BEGINS WITH OUR CORNERING TEST WHERE WE REPRODUCE THE INCREDIBLE STRESS CREATED DURING CORNERING ON A MOTORCYCLE. EACH WHEEL DESIGN IS SUBJECTED TO THIS MECHANICAL TORTURE AND THEN EVALUATED FOR DAMAGE. THE WHEEL IS TESTED AT 2.25 TIMES THE MAXIMUM TIRE LOAD FOR 1,000,000 CYCLES. IF A WHEEL DOES NOT SURVIVE THIS TEST OR ANY OTHER TEST, IT IS SCRAPPED AND REDESIGNED.

② RADIAL LOAD



NEXT, THE WHEEL IS LOADED ON OUR GIANT RADIAL LOAD TESTER WHICH SIMULATES A LOAD ON A TIRE/WHEEL ASSEMBLY IN A VERTICAL RIDING CONDITION AT 2.25 TIMES THE MAXIMUM TIRE LOAD FOR 100,000 CYCLES ON A FRONT WHEEL AND 500,000 ON A REAR WHEEL. THE WHEEL IS SPUN UP TO SPEED DURING THESE CYCLES THEN CHECKED FOR FLAWS BEFORE ENDURING THE NEXT PHYSICAL TEST.

③ TORSIONAL



THE THIRD TEST IN THE PM REPERTOIRE IS THE TORSION LOAD TESTER WHICH SIMULATES WHAT A WHEEL WOULD ENDURE IF YOU WERE SHIFTING AT WIDE OPEN THROTTLE OR HITTING THE BRAKES TO THE POINT OF SKIDDING FOR 100,000 CYCLES WITH THE HEAVIEST AND MOST POWERFUL PRODUCTION BIKE. LOAD SENSITIVE RAMS CYCLE BACK AND FORTH REPLICATING REAL WORLD STYLE TORTURE IN AN ATTEMPT TO RIP THE HUB OUT OF THE RIM. EACH WHEEL DESIGN IS GIVEN THIS TORTURE TREATMENT BEFORE MOVING ON TO ITS FINAL PHYSICAL TEST.

④ IMPACT



THE FOURTH PHYSICAL TEST SENDS EACH PM WHEEL DESIGN TO OUR MASSIVE IMPACT TESTING UNIT WHICH SIMULATES THE POT HOLES AND ROAD HAZARDS THAT A WHEEL IS SUBJECTED TO IN THE REAL WORLD. WE WRAP EACH WHEEL DESIGN WITH A TIRE AND REPLICATE A HARD EDGED HIT; THE WHEEL MUST RETAIN AIR PRESSURE FOR A SPECIFIED AMOUNT OF TIME IN ORDER TO PASS. IF A WHEEL PASSES THIS FINAL TEST IT LIVES TO SEE ANOTHER DAY AND MOVES INTO PRODUCTION.



THE ONE
EVERLASTING
FORMULA



FORMULA



THIS DESIGN HAS THE PERFECT FORMULA OF CONTEMPORARY SIMPLICITY AND A RACE INSPIRED LIGHTWEIGHT TAPERED AND POCKETED 5-SPOKE DESIGN. WITH ENGINEERING DETAILS THAT WILL BE APPRECIATED FOR DECADES TO COME, THIS IS THE ONE WITH EVERLASTING STYLE.



SHOW
CHROME

Contrast
Cut

Contrast
Cut
PLATINUM

CUSTOM
PT
FINISH SHOP



SPEED PAST
ALL OTHERS
IN YOUR
ORIGINAL
WAY



DEL REY



THE DEL REY SPEEDS FAST FORWARD IN STYLE WITH ITS LIGHTENING QUICK DIRECTIONAL SPOKES AND ORGANIC SCULPTED RIM. AS OUR NEWEST MEMBER OF OUR PRESTIGIOUS CONTOUR COLLECTION, THIS HIGH-END WHEEL FLEXES ITS CURVES FROM THE STOUT FORGED BODY. THERE'S ONLY ONE WAY TO BE REMEMBERED, IT'S THE DEL REY.



CONTOUR
COLLECTION

SHOW
CHROME

Contrast
But

Contrast
But
PLATINUM

CUSTOM
FINISH SHOP



RECON



WE WERE INSPIRED BY A LESS-IS-MORE VIEW POINT FOR THE RECON WHEEL - LESS ALUMINUM AND MORE OF NOTHING. LIGHTWEIGHT AND STEALTH-LIKE GRACEFUL BEAUTY, THIS WHEEL'S UNIQUE POWER IS IN THE DETAILS. STOP READING THIS RIGHT NOW AND DO A LITTLE RECON WITH YOUR EYES ON THE WHEEL. DISCOVER THE CAPTIVATING CONTOUR PROFILE SHAPES WITH PERFECT BEVELING AND THE ARMY OF SPEED-DOTS SURROUNDING THE RIM. YOU SURRENDER NOW?



CONTOUR
COLLECTION

SHOW
CHROME

Contrast
But

Contrast
But
PLATINUM

CUSTOM
FINISH SHOP



REVEL



REVEL IS A PERFECT 10; 10 SPOKES ELEGANTLY STRETCHING FROM HUB TO RIM IN UTOPIAN UNISON. THE REVEL WHEEL, AS A PART OF THE PREMIUM CONTOUR COLLECTION, IS UNIQUE IN THE FACT THAT THE SPOKES NEAR THE RIM HAVE A MORE EXTRUDED, DIMENSIONAL DESIGN BOASTING HIGH-END ENGINEERING WORK AND CUSTOM DESIGN. GRACEFULLY DESIGNED, THESE PROVOCATIVE SPOKES FEATURE A MACHINE CUT GROOVE STARTING FROM THE EDGE OF THE RIM AND TRAVELS ALL THE WAY TO THE HUB. REVEL IN LUXURY.

CONTOUR
COLLECTION

SHOW
CHROME

Contrast
Cut

Contrast
Cut
PLATINUM

CUSTOM
FINISH SHOP



SYNDICATE



THIS WHEEL IS A SYNDICATE OF THE BEST DESIGN ELEMENTS FROM OUR BEST SELLING WHEELS. IT'S A GATHERING OF WHAT WORKS WELL IN A WHEEL DESIGN, SIMPLY PUT. BORN FROM THE CONTOUR COLLECTION MEATY ALUMINUM FORGED BLANK, THE SYNDICATE HAS THE FAMOUS FIVE SPOKE DESIGN WITH EXAGGERATED CONTOUR LINES THAT TRANSITION SMOOTHLY ONTO THE RIM WITH MACHINED DETAIL FROM HUB TO EDGE OF RIM AND SUNLIGHT-CATCHING ACCENT GROOVES ON THE VERY EDGE OF THE RIM. NOW THAT WAS A MOUTHFUL! THIS WHEEL HAS IT ALL.



CONTOUR
COLLECTION

SHOW
CHROME

Contrast
But

Contrast
But
PLATINUM

CUSTOM
FINISH SHOP



VIRTUE



WE DESIGNED THE VIRTUE WHEEL TO HAVE IT ALL. STARTING WITH THE FACT THAT THIS WHEEL WAS MACHINED FROM A PREMIUM FORGING BLANK THAT HAS MORE BILLET MATERIAL FROM HUB TO RIM; NOTICE THE DIMENSION OF DESIGN WHERE SPOKE MEETS RIM. ADD MACHINE CUT BEAUTY ACCENTS TO THE DIVINE SEVEN SPOKES WITH RIM CUT DETAILING AND YOU'VE GOT A WHEEL THAT STANDS AND SHINES VIRTUOUS ABOVE ALL OTHER WHEELS. RIGHTEOUS INDEED.

CONTOUR
COLLECTION

SHOW
CHROME

Contrast
Cut

Contrast
Cut
PLATINUM

CUSTOM
FINISH SHOP



DIXON



THE DIXON DESIGN WAS BORN FROM THE PHILOSOPHY OF LUXURY. FROM HUB TO RIM, ITS LONG LEGS ELEGANTLY EXTEND AND BEND AT THE PERFECT POINT OF CONCEPTION, WHILE THE COMPOSITION ON THE RIM BODY GIVES BOUNTY TO ALL ANGLES.



SHOW
CHROME
Contrast
Cut
Contrast
Cut
PLATINUM
CUSTOM
PM
FINISH SHOP



GASSER



THE GASSER IS FIVE SPOKES OF VINTAGE STYLED ELEGANCE FLOWING SMOOTHLY INTO THE RIM. THE RIM ITSELF FEATURES A CONTOUR RIM LIP, RESULTING IN A GRACEFUL ARC FROM SPOKE TO TIRE.

SHOW
CHROME

Contrast
Cut
™

Contrast
Cut
™
PLATINUM

CUSTOM
PM
FINISH SHOP



HEATHEN



THE HEATHEN WHEEL BEGINS AS 7 SPOKES AND SPLITS INTO 14 ORNATE TENDRILS BEFORE BLENDING INTO THE RIM CENTER AND THEN FOLLOWS WITH A COMPLIMENTARY DESIGN ON THE OUTER EDGE OF THE SUBTLY CURVING RIM FACE.



SHOW
CHROME

Contrast
Cut[™]

Contrast
Cut[™]
PLATINUM

CUSTOM
PM
FINISH SHOP



ICON



THE ICON IS ALL CLEAN LINES AND DECADENT DETAILING. WITH A 5 SPLIT-SPOKE DESIGN EXTENDING TO THE EDGES OF THE WHEEL, THE ICON IS FURTHER PUNCTUATED BY MACHINED-OUT DETAILING RUNNING LENGTHWISE ALONG THE RIM BETWEEN EACH SPOKE. EMBODY SHEER LUXURY IN CHROME, OR EVOKE A SLEEKER FORM OF GLAMOUR WITH A BEAUTIFULLY APPLIED PLATINUM CUT FINISH; THIS TIMELESS DESIGN WILL PLEASE FOR YEARS TO COME.

SHOW
CHROME
Contrast
Cut[™]

Contrast
Cut[™]
PLATINUM

CUSTOM
PM
FINISH SHOP



LUXE



THE LUXE FEATURES A TIMELESS DESIGN WITH 5 CARVED SPOKES THAT EMERGE FROM THE HUB, SPLIT, AND MELT BACK INTO THE SMOOTH RIM LIP. THE DRAMATIC, MACHINED GROOVES ON THE OUTER RIM LIP RESULT IN A SUBLIME MOTORCYCLE WHEEL.



SHOW
CHROME
Contrast
Cut
Contrast
Cut
PLATINUM
CUSTOM
PM
FINISH SHOP



PARAMOUNT



THE PARAMOUNT IS IN A LEAGUE OF ITS OWN WITH SEVEN FLARED SPOKES AND BEAUTIFULLY MACHINED DETAIL FROM THE HUB ALL THE WAY TO THE MACHINED POCKETS OF THE OUTER RIM LIP. THE PARAMOUNT IS AGGRESSIVE ENOUGH TO MAKE A STATEMENT, YET DELIGHTFULLY REFINED.

SHOW
CHROME

Contrast
Cut
™

Contrast
Cut
™
PLATINUM

CUSTOM
PM
FINISH SHOP



RIVAL



THE RIVAL POSSESSES FIVE RADICAL, SWEEP SPOKES FOR A SINISTER LOOKING MOTORCYCLE WHEEL. EACH SPOKE FEATURES UNMATCHED DETAIL WITH CARVED ALUMINUM WINDOWS AND PROTRUDING EDGES. THE WILD DESIGN AND DIRECTIONAL ORIENTATION OF THE WHEEL GIVE THE ILLUSION OF SPEED, EVEN WHEN IT'S SITTING STILL.



SHOW
CHROME
Contrast
Cut
Contrast
Cut
PLATINUM
CUSTOM
FINISH SHOP



RIVIERA



THE RIVIERA FEATURES EIGHT LINEAR SPOKES FOR A SIMPLE, YET DEFINED MOTORCYCLE WHEEL. THE FACETED SPOKES SPLIT INTO 16 BEFORE FUSING BACK INTO THE RIM LIP. THE STYLING IS CARRIED ALL THE WAY TO THE SOFT RIM LIP WITH CUSTOM GROOVES FOR A MORE INTENSE LOOK.

SHOW
CHROME

Contrast
Cut[™]

Contrast
Cut[™]
PLATINUM

CUSTOM
PM
FINISH SHOP



SHOCK



THE SHOCK WHEEL FEATURES MULTIPLE ENGRAVED GROOVES RACING DOWN EACH OF THE FIVE WIDE SPOKES OF THIS DESIGN. FORCEFUL BY NATURE, THE SHOCK DEMANDS TO BE SEEN AND BELONGS ON A BIKE EQUALLY AS OPINIONATED. BE FLASHY AND COQUETTISH IN CHROME, OR BOLD AND VISUALLY STRIKING IN A PLATINUM CUT, THE SHOCK IS MEANT TO TURN HEADS AND COAX OUT A WHISTLE OF APPRECIATION.



SHOW
CHROME

Contrast
Cut

Contrast
Cut
PLATINUM

CUSTOM
PM
FINISH SHOP



SUPRA



SPEED IS STYLE. THE SUPRA'S STYLE IS A FAST MOVEMENT FORWARD IN DESIGN AND Demeanor. IT'S POWERFUL VORTEX OF TEN SPEED SPOKES WILL NO DOUBT TURN HEADS AND THEIR MINDS. SYNC UP WITH THE SUPRA AND RIDE TO NEW HEIGHTS.

SHOW
CHROME

Contrast
Cut[™]

Contrast
Cut[™]
PLATINUM

CUSTOM
PM
FINISH SHOP



TORQUE



THE TORQUE IS A DIRECTIONAL WHEEL WITH 9 GRACEFULLY ARCED SPOKES, EACH TERMINATING IN A KNIFE LIKE PROFILE AT THE RIM. LOOKS FAST EVEN SITTING STILL!



SHOW
CHROME

Contrast
Cut

Contrast
Cut
PLATINUM

CUSTOM
PM
FINISH SHOP



WRATH



THE WRATH IS HIGHLY DETAILED 5 SPOKE WHEEL THAT WILL LOOK AT HOME ON THE CLEANEST OF CUSTOMS AS WELL AS ANY HARDCORE CHOPPER. EACH SPAR IS A WORK OF ART THAT EMERGES FROM THE HUB IN A SUBTLE ARC OF BILLET WIZARDRY.

SHOW
CHROME

Contrast
Cut[™]

Contrast
Cut[™]
PLATINUM

CUSTOM
FINISH SHOP



DOMINO



THE DOMINO TAKES NINE SPOKES OFF OF THE HUB, SPLITS THEM INTO 18 AND THEN MERGES INTO THE RIM WITH OUR STYLISH SPEED DOTS. IT'LL LOOK RIGHT ON ANY HARLEY OR CUSTOM MOTORCYCLE.



HOOLIGAN



THE HOOLIGAN IS A STUDY IN MACHINED ALUMINUM DETAILING. GRACEFUL ARCS OF ALUMINUM SPLIT AND FADE OFF AS THE SPOKE TERMINATES INTO THE RIM. CAPPED BY A TRIO OF SPEED DOTS BEG FOR COLOR MATCHED PAINT TO COMPLIMENT YOUR BIKE.



MERC WIRE



THE MERC WIRE WHEEL SERVES NOSTALGIA TWO WAYS. THE RIBBED CONCENTRIC LINES MACHINED AROUND THE DIAMETER OF THE SMOOTH RIM LIP ARE PAIRED WITH A SET OF CLASSIC SPOKES THAT ARE REMINISCENT OF THE HOT ROD ERA. SUBTLE AND STYLISH, THE MERC IS TIMELESS.

SHOW
CHROME

Contrast
Cut

Contrast
Cut
PLATINUM

BLACK
EPS

SPOKED WIRE



THE SPOKED WIRE WHEEL IS A PERFECT BLEND OF CLASSIC SPOKE STYLING AND MODERN CNC-MACHINED RIM DETAIL. THE ALUMINUM HOOP, INTEGRATED HUB AND STAINLESS STEEL SPOKES KEEP THESE WHEELS LIGHTWEIGHT, YET STRONG. GIVE YOUR BIKE THE BEST OF BOTH WORLDS.



BIG WHEELS

SHOW CHROME

Contrast Cut

Contrast Cut PLATINUM

CUSTOM FINISH SHOP

SHOCK



ICON

26 x 3.5
 CHROME & CONTRAST CUT \$1849.95
 PLATINUM CUT \$1899.95

26 x 3.5 - CONTOUR COLLECTION
 CHROME & CONTRAST CUT \$2049.95
 PLATINUM CUT \$2099.95

*ADDITIONAL \$100 FOR SYNDICATE & DEL REY DESIGNS

30 x 4.0
 CHROME & CONTRAST CUT \$2949.95
 PLATINUM CUT \$2999.95

OUR AMERICAN SOCIETY CALLS IT "KEEPING UP WITH THE JONESES." WE SAY "KEEPING UP WITH THE COLOSSAL." AND WHAT BETTER WAY THAN TO ROLL WITH THE BIGGEST WHEEL IN THE INDUSTRY – THE 26" OR THE 30." EXCESSIVE? YES. NECESSARY? YES. BE THE FIRST IN YOUR CIRCLE TO GO BIG, AND LET EVERYBODY ELSE FOLLOW.

DIXON 26" x 3.5" 30" x 4.0"	FORMULA 26" x 3.5" 30" x 4.0"	ICON 26" x 3.5" 30" x 4.0"	LUXE 26" x 3.5" 30" x 4.0"	PARAMOUNT 26" x 3.5" 30" x 4.0"	SHOCK 26" x 3.5" 30" x 4.0"	SUPRA 26" x 3.5" 30" x 4.0"	WRATH 26" x 3.5" 30" x 4.0"						
DOMINO 26" x 3.5"	GASSER 26" x 3.5"	HEATHEN 26" x 3.5"	HOOLIGAN 26" x 3.5"	RIVAL 26" x 3.5"	RIVIERA 26" x 3.5"	TORQUE 26" x 3.5"							
<table border="1"> <tr> <td>DEL REY 26" x 3.5"</td> <td>RECON 26" x 3.5"</td> <td>REVEL 26" x 3.5"</td> <td>SYNDICATE 26" x 3.5"</td> <td>VIRTUE 26" x 3.5"</td> </tr> </table>							DEL REY 26" x 3.5"	RECON 26" x 3.5"	REVEL 26" x 3.5"	SYNDICATE 26" x 3.5"	VIRTUE 26" x 3.5"		
DEL REY 26" x 3.5"	RECON 26" x 3.5"	REVEL 26" x 3.5"	SYNDICATE 26" x 3.5"	VIRTUE 26" x 3.5"									



LUXE

BIG WHEEL BRAKE SYSTEM



FEATURING AN XTREME MACHINE CUSTOM MOTORCYCLE WITH A 30" CRUISE WHEEL DESIGN.

- 2000-UP FLH TOURING MODELS WITH PM SPECIFIC 16" ROTOR HUB APPLICATIONS
- FITS OTHER 2000 AND UP APPLICATIONS WITH DIFFERENT CALIPER SPACING
- AFTERMARKET BRAKE LINE(S) NECESSARY



16" DISC | POLISH, CONTRAST CUT & CONTRAST CUT PLATINUM - \$649.95

BRAKE SYSTEM | CHROME & CONTRAST CUT - \$1099.95

MEGABRAKE



16" DISCS



THE PM MEGABRAKE 16" ROTOR AND CALIPER COMBINATION IS DESIGNED TO MAINTAIN THE PERFORMANCE OF A DUAL CALIPER SYSTEM WHEN CONVERTING YOUR TOURING MODEL TO SINGLE DISC WITH 21" AND LARGER FRONT WHEELS. BY UTILIZING TWO OF PM'S PROVEN CLASSIC 4 PISTON CALIPERS AND PM'S NEW HIGH PERFORMANCE SILENT FLOATING 16" ROTOR CUSTOMERS CAN NOW CONVERT TO SINGLE DISC ON BIG WHEEL TOURING BIKES WITHOUT CHANGING MASTER CYLINDERS AND CHANGING HYDRAULIC FUNCTION AND PERFORMANCE. BIG WHEELED TOURING BIKES NEED BIG BRAKES AND THIS KIT IS IT.



WHEEL PRICING

CONTOUR COLLECTION WHEELS



WE KNOW WE HAVE THE BEST WHEELS ON THE MARKET. BUT DO YOU WANT THE BEST OF THE BEST? WELL HERE YOU GO, IT'S CALLED THE CONTOUR COLLECTION. THIS UNIQUE, HIGH-END COLLECTION OF WHEELS INCLUDES FIVE DESIGNS - THE RECON, REVEL, SYNDICATE, VIRTUE AND THE ALL NEW DEL REY. TAKE A GOOD LOOK AT THESE DESIGNS AND YOU'LL NOTICE THERE'S A WHOLE NEW DIMENSION IN THESE BILLET BEAUTIES. IT STARTS WITH A RE-ENGINEERING OF THE FORGED BLANK BY ADDING MATERIAL FROM THE HUB TO THE RIM-LIP AREA. THIS PROVIDES THE MEANS FOR A DEEPER MACHINE CUT - THEREFORE ADDING THE MOST CUSTOM AND INSPIRING MOTORCYCLE WHEEL DESIGN IN THE WORLD.

IMAGE SERIES WHEELS



PERFORMANCE MACHINE WHEELS ARE THE FINEST WHEELS AVAILABLE TO THE MOTORCYCLE AFTERMARKET. INNOVATIVE AND STYLISH, THE FIT AND FUNCTION OF PM WHEELS GOES UNMATCHED IN THE INDUSTRY. EACH WHEEL IS TESTED IN-HOUSE TO JASO AND TUV STANDARDS TO ENSURE ITS PERFORMANCE UNDER REAL WORLD RIDING CONDITIONS. PM WHEELS ARE OFFERED IN MANY DIFFERENT STYLES AND SIZES WITH MATCHING COMPONENTS IN A VARIETY OF FINISHES. PM OFFERS CUSTOM FINISHES ON SELECT WHEEL DESIGNS. PM WHEELS ARE OFFERED FOR V-TWIN, METRIC, AND SPORTBIKE APPLICATIONS.

**16x3.5 | 17x3.5
18x3.5 | 19x2.125**

POLISH	\$1199.95
CHROME	\$1449.95
CONTRAST CUT	\$1449.95
PLATINUM CUT	\$1499.95

**16x5.0 | 17x6.25 | 19x3.0 | 18x4.25
18x5.5 | 21x2.125 | 21x3.5**

POLISH	\$1299.95
CHROME	\$1549.95
CONTRAST CUT	\$1549.95
PLATINUM CUT	\$1599.95

**16x3.5 | 17x3.5
18x3.5 | 19x2.125**

POLISH	\$999.95
CHROME	\$1249.95
CONTRAST CUT	\$1249.95
PLATINUM CUT	\$1299.95

**16x5.0 | 17x6.0 | 19x3.0 | 18x4.25
18x5.5 | 21x2.125 | 21x3.5**

POLISH	\$1099.95
CHROME	\$1349.95
CONTRAST CUT	\$1349.95
PLATINUM CUT	\$1399.95

18x8.5 | 23x3.5

POLISH	\$1599.95
CHROME	\$1849.95
CONTRAST CUT	\$1849.95
PLATINUM CUT	\$1899.95

18x10.5

POLISH	\$1699.95
CHROME	\$1949.95
CONTRAST CUT	\$1949.95
PLATINUM CUT	\$1999.95

18x8.5 | 23x3.5

POLISH	\$1399.95
CHROME	\$1649.95
CONTRAST CUT	\$1649.95
PLATINUM CUT	\$1699.95

18x10 | 18x10.5

POLISH	\$1499.95
CHROME	\$1749.95
CONTRAST CUT	\$1749.95
PLATINUM CUT	\$1799.95

26x3.5

CHROME	\$2049.95
CONTRAST CUT	\$2049.95
PLATINUM CUT	\$2099.95

*ADD \$100 FOR SYNDICATE WHEEL. ADDITIONAL COST FOR V-ROD MODELS.

26x3.5

CHROME	\$1849.95
CONTRAST CUT	\$1849.95
PLATINUM CUT	\$1899.95

30x4.0

CHROME	\$2949.95
CONTRAST CUT	\$2949.95
PLATINUM CUT	\$2999.95

ADDITIONAL COST FOR V-ROD MODELS.

WIRE WHEELS



OUR LOVE FOR CLASSIC STYLING HAS INSPIRED OUR LINE OF WIRE WHEELS. FEATURING A SIMPLE 40-SPOKE DESIGN WITH OUR THE TRADEMARK RIM LIP DETAIL THAT PM INTRODUCED TO THE INDUSTRY A FEW YEARS BACK. WHETHER YOU PREFER THE SUBTLE, RIBBED LINES OF THE MERC OR THE MACHINED GROOVES OF THE SPOKED HIGHLIGHTED BY OUR SIGNATURE SPEED DOTS, EACH IS CRAFTED FROM FORGED ALUMINUM HOOPS WITH PROPRIETARY STAINLESS STEEL SPOKES FOR STRENGTH. GET WIRED!

**17x6.0 | 18x4.25 | 18x5.5
21x2.125 | 21x3.5**

CHROME	\$1349.95
CONTRAST CUT	\$1349.95
PLATINUM CUT	\$1399.95
BLACK OPS	\$1349.95

18x3.5

CHROME	\$1249.95
CONTRAST CUT	\$1249.95
PLATINUM CUT	\$1299.95
BLACK OPS	\$1249.95

23x3.5

CHROME	\$1649.95
CONTRAST CUT	\$1649.95
PLATINUM CUT	\$1699.95
BLACK OPS	\$1649.95

WIRE WHEELS ARE AVAILABLE IN SELECT SIZES AND APPLICATIONS.



COMPONENT PRICING & SERVICES

MATCHING DISCS



ALL PERFORMANCE MACHINE DISCS USE A STAINLESS STEEL OUTER BAND. PM USES A HIGH GRADE 420 STAINLESS THAT WILL NOT GAUL OR SQUEAL LIKE LESSER QUALITY DISCS. THE LATEST VERSION OF PM OUTER BANDS CAN BE REMOVED AND REPLACED ONCE WORN. ALL PM DISCS USE A MACHINED ALUMINUM CARRIER AND ARE AVAILABLE IN 11.5", 11.8", 13" AND 16". THE CARRIER IS MATCHED TO ITS RESPECTIVE WHEEL AND WILL HAVE A BOLT PATTERN SPECIFIC TO THE FRONT OR REAR.

11.5" | 11.8" DISC

POLISH	\$299.95
CHROME	\$329.95
CONTRAST CUT	\$329.95
PLATINUM CUT	\$329.95

13" DISC

POLISH	\$429.95
CONTRAST CUT	\$439.95
PLATINUM CUT	\$449.95

16" DISC

CHROME	\$649.95
CONTRAST CUT	\$649.95
PLATINUM CUT	\$649.95

MATCHING BELT SPROCKETS



PM BELT SPROCKETS ARE MACHINED TO MIRROR THE PATTERN OF THE PM WHEEL BEHIND IT FOR A COMPLETE CUSTOM LOOK. PM BELT SPROCKETS FEATURE HARD ANODIZED TEETH TO REDUCE WEAR AND EXTEND THE LIFE OF THE PULLEY.

BELT SPROCKETS

POLISH	\$549.00
CHROME	\$599.00
CONTRAST CUT	\$599.00
PLATINUM CUT	\$629.00

UNIVERSAL FL & V-ROD

POLISH	\$579.00
CHROME	\$649.00
CONTRAST CUT	\$649.00
PLATINUM CUT	\$679.00

LEAD TIMES



PERFORMANCE MACHINE WHEELS AND MATCHING COMPONENTS (DISCS, BELT SPROCKETS, AND SUPER GAS AIR CLEANER FACEPLATES) ARE MADE TO ORDER. PERFORMANCE MACHINE OR YOUR DEALER WILL QUOTE A LEAD TIME AT TIME OF ORDER. PERFORMANCE MACHINE WORKS DILIGENTLY TO MEET ALL LEAD TIMES, BUT DUE TO THE NATURE OF THE MANUFACTURING BUSINESS ALL LEAD TIMES ARE ESTIMATED.

MATCHING CHAIN SPROCKETS



PM CHAIN SPROCKETS ARE MACHINED FROM 7075 T6 ALUMINUM FOR OPTIMAL WEAR. AVAILABLE IN 48 TOOTH COUNT FOR USE WITH 530 CHAIN.

CHAIN SPROCKETS

POLISH	\$199.95
CONTRAST CUT	\$229.95
PLATINUM CUT	\$229.95

CHROME WARRANTY



'SHOW CHROME' IS WHAT YOU GET WITH EVERY PM CHROME PRODUCT. OUR SECRET IS PREPARATION. WE SEND EACH RAW PART TO OUR POLISHING DEPARTMENT, CREATING A MIRROR LIKE FINISH BEFORE THE CHROME IS EVEN LAID ON. THIS PROCESS ALLOWS PM TO CREATE ULTRA SMOOTH AND DURABLE CHROME PLATED PARTS. A LUSTROUS FINISH IS EASY TO MAINTAIN WITH PROPER MAINTENANCE AND CARE. PM INCLUDES A LIFETIME LIMITED WARRANTY ON ALL CHROME PRODUCTS.

EURO COMPLIANT



AS THE INDUSTRY LEADER IN THE MOTORCYCLE AFTERMARKET, PERFORMANCE MACHINE HAS BEEN TESTING OUR WHEELS IN-HOUSE USING TUV STANDARDS FOR DECADES. TUV IS THE EUROPEAN STANDARD FOR TESTING AND ALTHOUGH THE PERFORMANCE MACHINE LA PALMA, CA FACILITY HAS RECEIVED TUV CERTIFICATION FROM THE TESTING ENTITY, EACH WHEEL HAS TO BE TESTED BY A EUROPEAN FACILITY IN ORDER TO BE APPROVED FOR STREET USE THROUGHOUT EUROPE.

EACH WHEEL DESIGN AND SIZE, RANGING FROM STOCK REPLACEMENT UP TO 23 X 3.5 AND 18 X 8.5 UNDERGOES RIGOROUS TESTS FOR CORNERING, IMPACT, TORSION, AND RADIAL LOAD BEFORE RECEIVING TUV CERTIFICATION. TUV DESIGNS INCLUDE HOOLIGAN, WRATH, GASSER, RIVIERA, ELEMENT, HEATHEN, TORQUE, LUXE AND DIESEL WHEEL DESIGNS WITH MATCHING DISCS AND BELT SPROCKETS.

VALUE ADDED SERVICES



PERFORMANCE MACHINE OFFERS THE OPTION TO HAVE MATCHING DISCS, PULLEYS AND TIRES (COST OF TIRES AND BOLT KITS ARE EXTRA) MOUNTED ON PM WHEELS DIRECTLY FROM THE FACTORY AT NO CHARGE. DISCS AND PULLEYS ARE MOUNTED BY PM TECHNICIANS TO ENSURE PROPER CLOCKING AND TORQUE SPECIFICATIONS. THESE VALUE ADDED SERVICES REMOVE THE HASSLE AND THE LIABILITY FOR OUR CUSTOMERS.



PM DESIGN FAMILIES

IN OUR CUSTOM WORLD, YOU GET TO CHOOSE YOUR OWN GOOD-LOOK'N FAMILY. TAKE FOR INSTANCE THE APEX FAMILY FEATURED BELOW. THEY'RE AN ALL AMERICAN FAMILY THAT REPRESENT GREAT VALUES IN QUALITY AND DESIGN. OR CHOOSE FROM ELEVEN OTHER GREAT FAMILIES WE OFFER.



APEX



DASH INSERT

FUEL DOOR

HEADLIGHT

BEZEL

FUEL CAP

GRIPS

PEGS

CONSISTENCY IS A VERY IMPORTANT ELEMENT WHEN IT COMES TO THE OVERALL LOOK AND THEME OF YOUR MOTORCYCLE. THAT'S WHY WE HAVE DEVELOPED DESIGN FAMILIES WITHIN OUR ACCESSORY PORTFOLIO. STUDY THESE DESIGNS, DISCOVER YOUR FAVORITE AND BE A PART OF ONE OF THESE COOL FAMILIES. IF YOUR FAVORITE FAMILY DOESN'T HAVE THE PARTICULAR PART YOU WANT, IT'S REALLY OKAY TO MIX FAMILIES - WE'RE JUST SAY'N!



ARRAY

AIR CLEANER, HORN COVER, AND FUEL CAP.



CLEAN

HEADLIGHT, HEADLIGHT BEZEL, EXHAUST TIPS AND IGNITION SWITCH.



CROSSBAR

HEADLIGHT AND HEADLIGHT BEZEL.



DRIVE

ENGINE & TRANSMISSION COVERS, AIR CLEANER, SHIFT RODS, BAG LATCHES AND TANK ACCESSORIES.



Grill

HEADLIGHT, HEADLIGHT BEZEL, FUEL CAP, SHIFT RODS, AND TANK ACCESSORIES.



HOLE SHOT

SHIFT RODS AND WINDSCREEN TRIM



Slash

FORK SLIDER COVERS AND EXHAUST TIPS.



SUPERLIGHT

FLOORBOARDS AND SHIFT RODS



tech

FORK LEGS AND FORK SLIDER COVERS.



Merc

WIRE WHEELS, AIR CLEANER, HORN COVER, FUEL CAP, HEADLIGHT, HEADLIGHT BEZEL, WINDSCREEN TRIM, SHIFT RODS, SLIDER COVERS, GRIPS & PEGS, EXHAUST TIPS AND TANK ACCESSORIES.



SCALLOP

ENGINE & TRANSMISSION COVERS, AIR CLEANER, HORN COVER, FUEL CAP, WINDSCREEN TRIM, BAG LATCHES, SHIFT RODS AND TANK ACCESSORIES.





PM CUSTOM FINISH SHOP

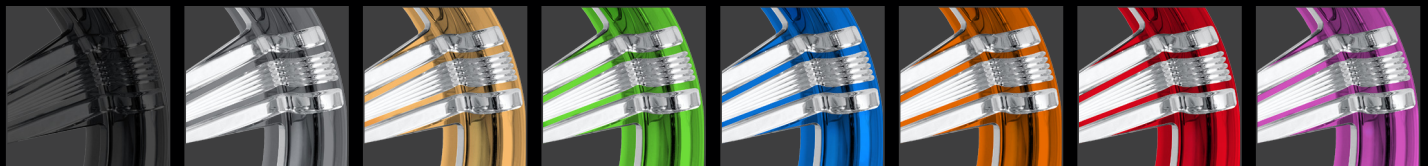
FINISH WITH AN IMPRESSION



OUR WHEEL DESIGN PORTFOLIO IS CONSIDERED THE MOST INTELLIGENT AND CREATIVE OFFERING IN THE AFTERMARKET INDUSTRY. HOWEVER, PM'S PRODUCT DEVELOPMENT INNOVATION NEVER RESTS, AND ALWAYS THINKS OUTSIDE THE ROUND WHEEL. WHAT WE'RE SHOWING YOU HERE ARE WAYS TO GO BEYOND THE TRADITIONAL CUSTOM WHEEL FINISH, AND ENTER INTO A WORLD OF TEXTURE AND COLOR POSSIBILITIES, PACKAGED AS THE PM CUSTOM FINISH SHOP. GO TO OUR WEBSITE TO SEE YOUR FAVORITE WHEEL DESIGN SHINE IN DIFFERENT WAYS.

CONTRAST CUT™ PLATINUM CUSTOM COLORS

ADD COLOR AND MAKE YOUR WORLD A BRILLIANT PLACE.



BLACK

GRAY

GOLD

GREEN

BLUE

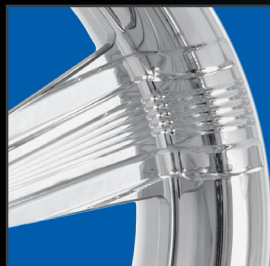
ORANGE

RED

PINK

*PM does not color match *Anodize colors may vary by lot

OUR FAMOUS FINISHES



PERFECT POLISH

PERFORMANCE MACHINE HAS A REPUTATION FOR SUPPLYING ONLY THE HIGHEST QUALITY POLISHING ON ALL ITS COMPONENTS. THIS IS A PRODUCT OF OUR IN-HOUSE POLISHING SHOP. EACH POLISHER TAKES PRIDE IN SUPPLYING A TOP QUALITY FINISH TO EVERY PRODUCT. THE HIGH LUSTER FINISH IS EASY TO MAINTAIN AND PM CAN RECOMMEND THE PROPER ALUMINUM POLISH TO KEEP IT LIKE NEW.



SHOW CHROME™

'SHOW CHROME' IS WHAT YOU GET WITH EVERY PM CHROME PRODUCT. OUR SECRET IS PREPARATION. WE SEND EACH RAW PART TO OUR POLISHING DEPARTMENT, CREATING A MIRROR LIKE FINISH BEFORE THE CHROME IS EVEN LAID ON. THIS PROCESS ALLOWS PM TO CREATE ULTRA SMOOTH AND DURABLE CHROME PLATED PARTS. A LUSTROUS FINISH IS EASY TO MAINTAIN WITH PROPER MAINTENANCE AND CARE.



CONTRAST CUT™

PM'S CONTRAST CUT FINISH STARTS OUT WITH A HIGH QUALITY, EXCEPTIONALLY SMOOTH ANODIZED SURFACE, THE RESULT OF AN INTENSIVE POLISH PREPARATION. ONCE ANODIZED, WE TAKE IT ONE STEP FURTHER TO ACHIEVE THE BOLDNESS OF THE CONTRAST CUT FINISH. AN ANODIZED BLANK HAS ITS' CONTRASTING ACCENTS MACHINED AWAY, ACCENTUATING THE DETAILS OF THE WHEEL DESIGN AND EXPOSING THE RAW ALUMINUM UNDERNEATH.



CONTRAST CUT™ PLATINUM

CONTRAST CUT PLATINUM PICKS UP WHERE THE CONTRAST CUT FINISH LEAVES OFF, AND TAKES IT TO THE NEXT LEVEL BY POLISHING THE EXPOSED ALUMINUM SURFACES TO A MIRROR LIKE FINISH. THIS RESULTS IN A STYLE THAT IS AS VISUALLY STRIKING AS IT IS TIMELESS.



BLACK OPS™

BOASTING A TEXTURED, MATTE FINISH AND HIGH-SHEEN CONTRASTING ACCENTS WHERE THE ALUMINUM HAS BEEN MACHINED AWAY TO GIVE EACH INDIVIDUAL PART ITS OWN STYLE, THIS PROPRIETARY FINISH BRINGS NEW MEANING TO THE DEFINITION OF BLACK.





FOR

Indian MOTORCYCLE

INDIAN MOTORCYCLES WERE A CORNERSTONE OF THE WORLD-WIDE MOTORCYCLE REVOLUTION AT THE START OF THE 20TH CENTURY. TODAY THE BRAND STILL CARRIES THAT HOUSEHOLD NAME AND UNIQUE STYLING IN THE MACHINES THEY CREATE FOR THE 21ST CENTURY.

WE NOW OFFER INDIAN OWNERS PREMIUM WHEEL DESIGN OPTIONS FOR CUSTOMIZATION TO THEIR MOTORCYCLES IN THE FORM OF OUR SIX MOST POPULAR WHEEL DESIGNS FOR THE SCOUT, CHIEFTAIN, CHIEF CLASSIC, CHIEF DARK HORSE, CHIEF VINTAGE AND ROADMASTER MODELS, PLUS MATCHING FRONT DISCS AND THE INNOVATIVE MAX HP AIR CLEANER FOR THE CHIEFTAIN, CHIEF CLASSIC, CHIEF DARK HORSE, CHIEF VINTAGE AND ROADMASTER MOTORCYCLES.



CHIEFTAIN

SCOUT

GOT A 2015-UP SCOUT OR A 2014-UP CHIEF MODEL? CHOOSE ONE OF THESE TOP RATED WHEELS AND MAKE YOUR INDIAN ONE OF A KIND CUSTOM MOTORCYCLE.

DIXON

HEATHEN

LUXE

PARAMOUNT

SUPRA

WRATH

MAX HP
AIR CLEANER



CHIEFTAIN ONLY



AVAILABLE THROUGH BIKER'S CHOICE, J&P CYCLES OR DIRECT FROM PERFORMANCE MACHINE





MADE FOR



VICTORY MOTORCYCLES AND PERFORMANCE MACHINE HAVE TEAMED UP IN AN EXCLUSIVE PARTNERSHIP TO BRING MORE CUSTOM ACCESSORY OPTIONS FOR VICTORY MOTORCYCLES. WITH OUR POPULAR FORGED WHEELS AND EXCLUSIVE ACCESSORIES FOR VICTORY, YOU CAN RIDE YOUR VICTORY IN PM STYLE.

PM WHEELS AND ACCESSORIES AVAILABLE THROUGH YOUR VICTORY DEALER.

CROSS COUNTRY
SUEDE PEARL



CROSS COUNTRY
HAVASU RED



CROSS COUNTRY
TITANIUM



GUNNER
SUEDE GREEN



CROSS COUNTRY
TITANIUM



HIGH-BALL
BLACK



MAGNUM
BLACK/STEEL



MAGNUM
BLACK/RED



MAGNUM
PEARL/BLACK



COME BUILD A VICTORY MOTORCYCLE WITH PM WHEELS AND ACCESSORIES IN THE ONLINE PM BUILD SHOP TO SEE HOW COOL EVERYTHING LOOKS.

PARAMOUNT



SUPRA



IGNITION
COVER



AIC
COVER



CAM
COVER



PRIMARY
COVER



CONTOUR
GRIPS



BUILD SHOP



BUILD YOUR VICTORY ▶



PM BUILD SHOP

BUILD IT BOLD



NOT SURE HOW OUR WHEELS AND COMPONENTS LOOK ON A HARLEY-DAVIDSON OR A VICTORY? IF YOU ASK US, WE'RE GONNA SAY ALL OUR WHEELS LOOK COOL ON ANY BIKE. BUT DON'T TAKE OUR WORD FOR IT - SEE IT FOR YOURSELF. GO TO OUR WEBSITE AND BUILD YOUR BIKE FROM 30 HARLEY AND 9 VICTORY MODELS TO CHOOSE FROM. UPON DESIGNING THE PERFECT MOTORCYCLE, SAVE IT TO PDF, PRINT IT OUT AND ATTACH IT TO THE FRIDGE, SHARE IT WITH THE WORLD ON YOUR FACEBOOK OR TWITTER ACCOUNTS, OR TAKE A MORE DISCREET ROUTE AND EMAIL IT TO FRIENDS AND FAMILY. NOW GO, CLICK AWAY.

CLICK HERE



Performance Machine | PM | x

performancemachine.com/inspiration/build-shop/motorcycles/Touring/FLHX/Street-Glide-SHOCK.html#

PRODUCTS INSPIRATION PM GARAGE TECH DEALERS COMPANY BLOG

Inspiration | PM Build Shop

BUILD SHOP

The Shock wheel features multiple engraved grooves racing down each of the five wide spokes of this design. Forceful by nature, the Shock demands to be seen and belongs on a bike equally as opinionated. Be flashy and coquettish in chrome, or bold and visually striking in a platinum cut, the Shock is meant to turn heads and coax out a whistle of appreciation.

SPORTSTER® DYNAS®

Harley-Davidson
FLHX Street Glide®

Shock Wheel
18" Rear - 21" or 18" Front

Choose a Finish and Size

21" 18"

18" Rear Wheel Matching Rear Disc 18" or 21" Front Wheel Matching Front Discs 6 Piston Callipers Super Gas Air Cleaner w/ Matching Faceplate

*The PM Build Shop is meant to be used as a visual aid to inspire your build! Always check with a qualified PM technician for proper fitment before placing an order for your parts.

Performance Machine.com

PRODUCTS INSPIRATION PM GARAGE TECH DEALERS COMPANY BLOG

DID YOU NOTICE THAT WE FEATURED
PM BUILD SHOP BIKES IN MOST OF THE
PREVIOUS WHEEL PAGES?
TAKE A LOOK AGAIN.

SEE HOW OUR WHEELS, CALIPERS AND AIR CLEANERS
WOULD LOOK ON A STOCK HARLEY OR VICTORY BIKE.



PM GARAGE



CUSTOM SHOP



Enter the Perfect Place.

INTRODUCING THE PM GARAGE – IT'S THE PERFECT VIRTUAL GARAGE FOR YOU TO VISIT WHEN YOU WANT TO DREAM A LITTLE ABOUT MAKING YOUR BIKE UNIQUE WITH PM STUFF. WE INVITE YOU TO COME ON IN AND GET STARTED FILLING YOUR SHELVES WITH PM PARTS TO BUILD YOUR DREAM BIKE.

Performance Machine.com
PERFECTION FOR MOTORCYCLES

PRODUCTS INSPIRATION PM GARAGE TECH DEALERS COMPANY BLOG

andy meadors

Fuel/Replacement Caps - Apex Contrast Cut Part# 0210-2024APX-BM Qty: 1 - \$69.95

MAX HP Air Cleaner Chrome Part# 0206-2080-CH Qty: 1 - \$449.95

Front-Piston Platinum Cut Part# 0051-2915-BM Qty: 1 - \$499.95

Rocker Box Cover Platinum Cut Part# 0177-2021-BMP Qty: 1 - \$499.95

Total Price: \$1,519.80

andy meadors
2013 HD Sportster XL 883N
Iron

Make your virtual PM Garage a reality.

PURCHASE PRINT EMAIL

Due to the highly technical nature of Performance Machine wheels, brakes, and components always be sure to check fitment with a PM representative prior to ordering or purchasing.

CLICK HERE

ADD YOUR FAVORITE PARTS TO YOUR OWN PM GARAGE.

Performance Machine.com
PERFECTION FOR MOTORCYCLES

PRODUCTS INSPIRATION PM GARAGE TECH DEALERS COMPANY BLOG

Motorcycle Accessories | Scallop Cover Line - Rocker Box Cover

SCALLOP Rocker Box Cover

1999-2013 Twin Cam SCALLOP COVER LINE

Chrome \$499.95 Contrast Cut \$499.95 Contrast Cut Platinum \$499.95 Black Ops \$499.95

The Performance Machine Scallop Cover Line was created to replace those whitening HD stock covers that are often overlooked, but present the perfect opportunity to add a custom hot rod touch to your motorcycle. The PM Scallop Line will put the detail in the details from front to rear and top to bottom with every cover available - Rocker Box Cover, Clutch, Ignition, Drive, Inspection, and Transmission. Each billet aluminum cover features timeless styled machined cut scallops with the iconic PM logo. These hot rod covers are available in three Chrome, our famous Contrast Cut, and the new innovative Black Ops finishes. All covers are a direct replacement for OE covers that are shipped with hardware and all necessary gaskets. Get them all and make your machine a perfect Performance Machine.

Performance Machine.com
PERFECTION FOR MOTORCYCLES

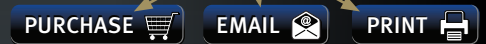
andy meadors

Change your virtual PM Garage a reality.

PURCHASE PRINT EMAIL

CHANGE YOUR THEME AND ADD YOUR BIKE.

SO YOU'VE COLLECTED ALL YOUR FAVORITE PARTS. NOW DO SOMETHING WITH THEM!

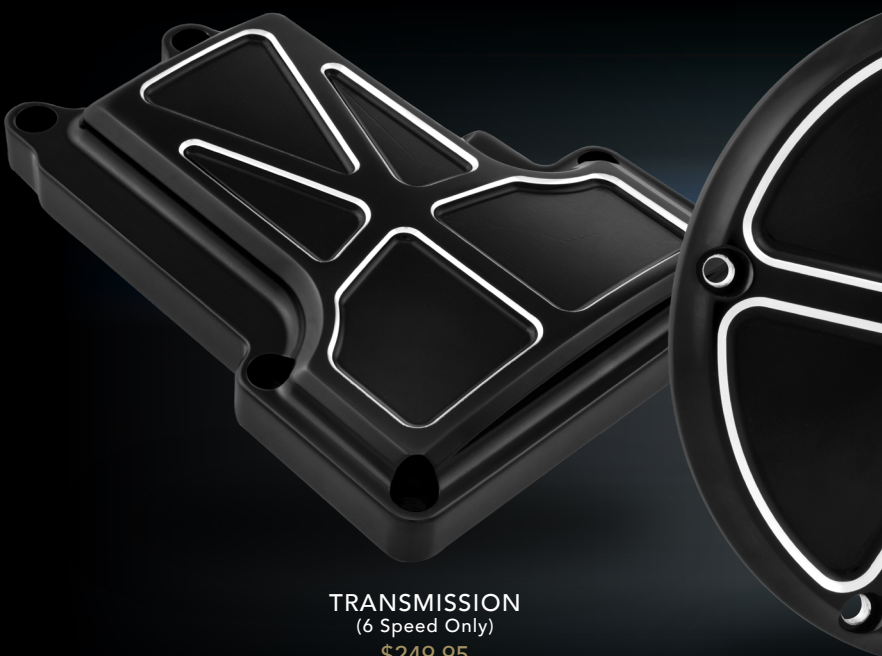


GO TO OUR WEBSITE, CLICK THE PM GARAGE MENU ITEM AND CREATE YOUR VERY OWN CUSTOM PM GARAGE.





ONE
OF
ONE

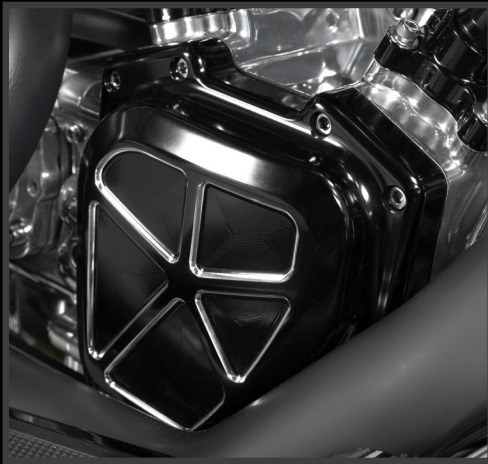


TRANSMISSION
(6 Speed Only)
\$249.95



1999-2016 TWIN CAM MODELS.

FORMULA COVER LINE



Contrast Cut **SHOW CHROME**



ROCKER BOX
\$499.95

THE FORMULA DESIGN WAS BORN FROM THE CONCEPT OF A CONTEMPORARY, SIMPLISTIC COMPOSITION THAT PAYS HOMAGE TO THE EARLY LIGHTWEIGHT SPOKE RACE WHEELS. WE ADOPTED THOSE SEXY CUES FROM THE FORMULA WHEEL AND ENGINEERED A SET OF ENGINE AND DRIVETRAIN COVERS TO MATCH. THESE CNC-MACHINED COVERS FEATURE STREAMLINED SPOKES STEMMING FROM THE CENTER FOR AN UNFORGETTABLE IMPRESSION. LIKE OUR OTHER COVER LINES, THESE SHIP TO YOU WITH GASKETS AND HARDWARE FOR A NICE D.I.Y INSTALL.



DERBY
\$149.95

CAM/TIMING
\$329.95



INSPECTION
\$99.95

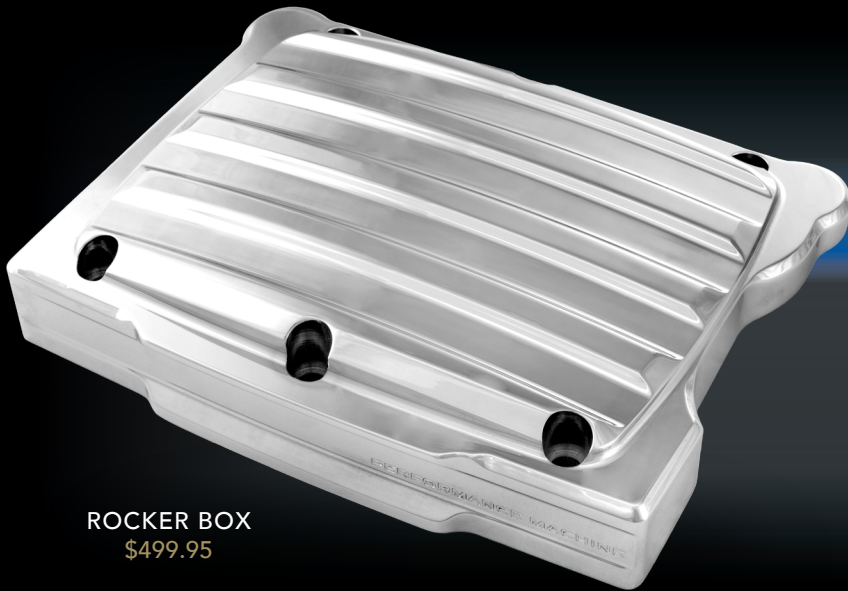


CLUTCH (Cable) \$299.95
(Hydraulic) \$349.95

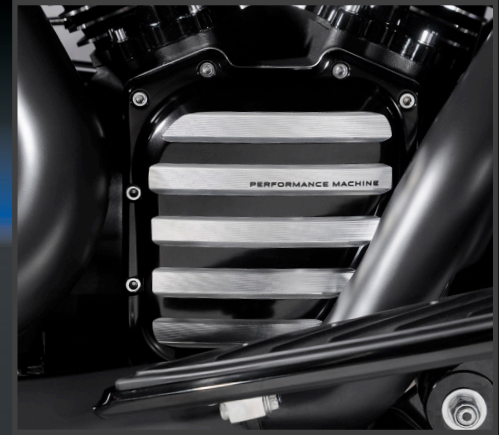


DRIVE COVER LINE

1999-2016 TWIN CAM MODELS.



ROCKER BOX
\$499.95



SHOW CHROME Contrast Cut PLATINUM BLACK OPS

THE DRIVE COVER LINE'S HOT ROD STYLING IS QUINTESSENTIALLY A BIG PART OF PM'S COOL BLUE BLOOD - IT RUNS DEEP IN US AND WE'RE JUST BEING TRUE TO OURSELVES AS DESIGNERS. THE DRIVE'S COMPOSITION ARE SPEED LINES THAT START AND FINISH FAST WITH A MODEST BEVEL TO THE CORNERS, GIVING THE PART A CUSTOM DETAIL THAT IS APPRECIATED. THESE COVERS ARE SIMPLISTIC YET AGGRESSIVE, BOLD YET ELEGANT - THAT DRIVE US FAST FORWARD TO WHAT WILL STILL BE COOL YEARS AND DECADES TO COME. WE'RE NOT MAKING THIS STUFF UP. THIS TYPE OF DESIGN IS INSPIRED FROM OVER 50 YEARS AGO AND IS STILL WAY-COOL TODAY. DRIVE FAST FORWARD AND DRESS YOUR MACHINE'S DRIVETRAIN WITH TIMELESS STYLE.



CLUTCH (Cable) \$299.95
(Hydraulic) \$349.95



DERBY
\$149.95



INSPECTION
\$99.95



TRANSMISSION
(5 or 6 Speed)
\$249.95

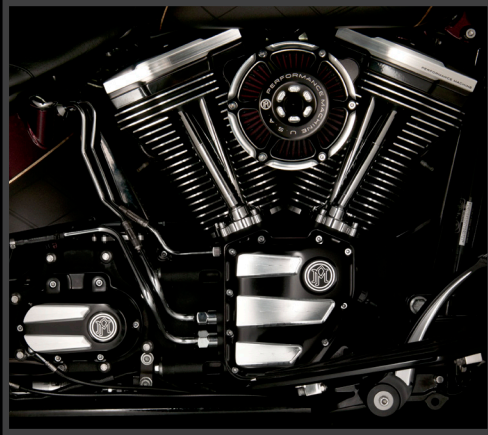


CAM/TIMING
\$329.95



1999-2016 TWIN CAM MODELS.

SCALLOP COVER LINE



BLACK OPS
Contrast Cut PLATINUM
Contrast Cut
SHOW CHROME



ROCKER BOX
\$499.95

THE PM SCALLOP LINE WILL PUT THE DEVIL IN THE DETAILS FROM FRONT TO REAR AND TOP TO BOTTOM WITH EVERY COVER POSSIBLE; ROCKER BOX, CAM, CLUTCH, IGNITION, DERBY, INSPECTION, AND TRANSMISSION. EACH BILLET ALUMINUM COVER FEATURES TIMELESS STYLED MACHINED CUT SCALLOPS WITH THE ICONIC PM LOGO. THESE HOT ROD COVERS ARE AVAILABLE IN SHOW CHROME, OUR FAMOUS CONTRAST CUT, AND THE INNOVATIVE BLACK OPS FINISHES. ALL COVERS ARE A DIRECT REPLACEMENT FOR OE COVERS AND ARE SHIPPED WITH HARDWARE AND ALL NECESSARY GASKETS. FITS MOST 1999 AND UP SOFTAIL, DYNA AND TOURING APPLICATIONS.



DERBY
\$149.95



INSPECTION
\$99.95



CLUTCH (Cable) \$299.95
(Hydraulic) \$349.95



TRANSMISSION
(5 or 6 Speed)
\$249.95



CAM/TIMING
\$329.95

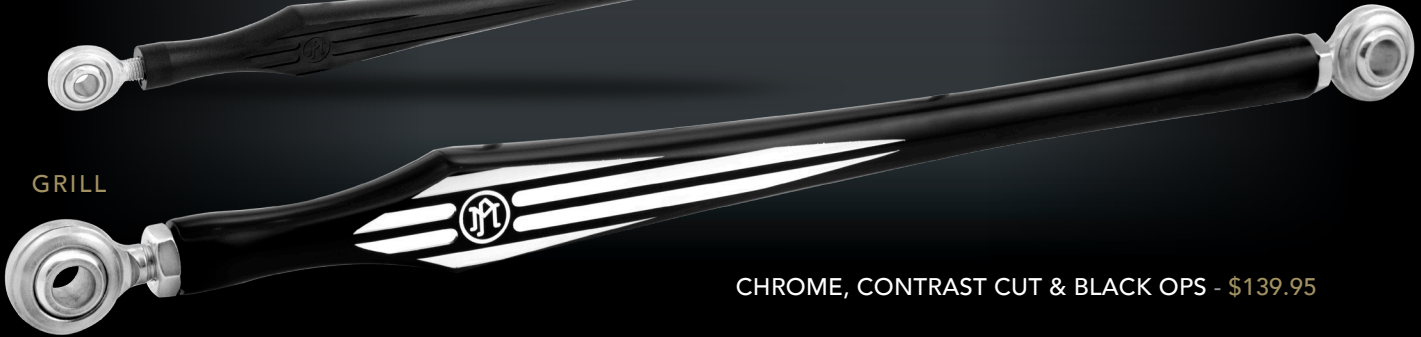
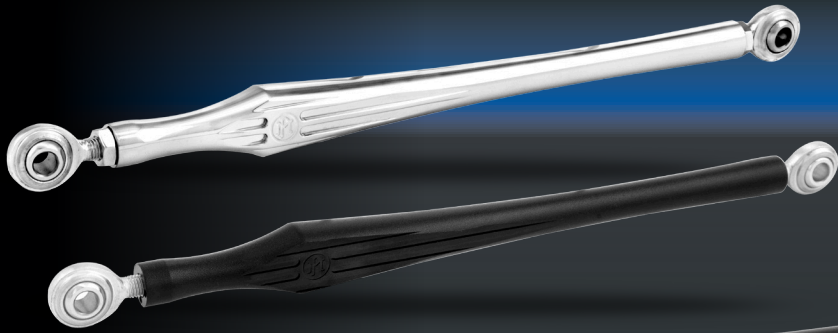
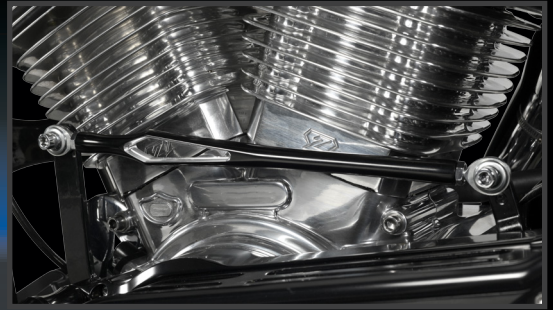


IGNITION
\$99.95



SHIFT RODS

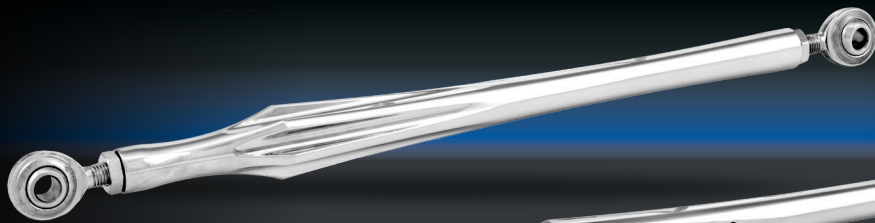
1986-UP FXST & FLH MODELS.



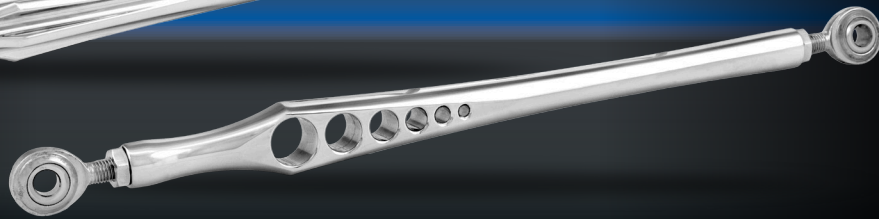
GRILL

CHROME, CONTRAST CUT & BLACK OPS - \$139.95

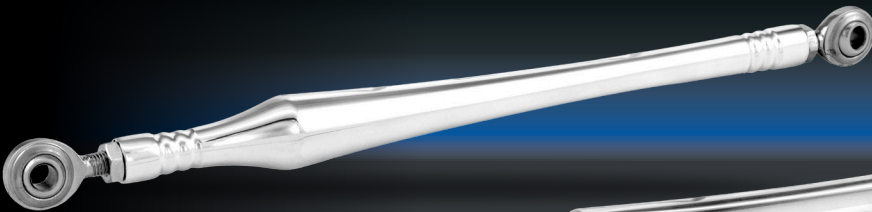
WHETHER YOUR STOCK SHIFT ROD IS THE FIRST THING YOU WANT TO SWITCH OUT FOR A CUSTOM ROD, OR IF IT'S THE LAST PART LEFT TO CUSTOMIZE ON YOUR BIKE - IT'S NOT A BAD IDEA TO MAKE THIS PART OF YOUR MOTORCYCLE LOOK COOL. THE BIKE'S DETAILS ARE ALWAYS APPRECIATED. CHOOSE FROM SIX DESIGNS - MOST OF WHICH ARE A MEMBER OF A PM DESIGN FAMILY.



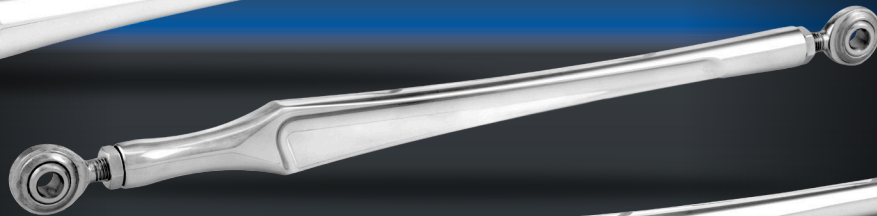
DRIVE



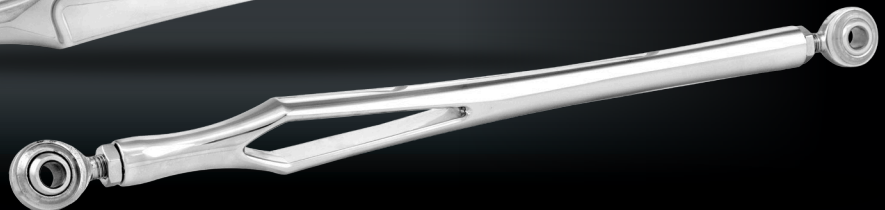
HOLE SHOT



MERC



SCALLOP



SUPERLIGHT

SHOW
CHROME

Contrast
Cut

BLACK
BLACK
OPS



TANK ACCESSORIES

2007-UP FLH/T MODELS.



DASH INSERTS
\$99.95

2008-Up FLHX, FLTRX
and H-D Trikes

APEX



FUEL DOORS
\$69.95

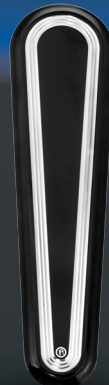
2008-Up FLHT, FLHX,
FLTR and H-D Trikes



IGNITION SWITCHES
\$99.95

2007-13 FLHT, FLHX,
FLTR and H-D Trikes
2014-16 FLHT, FLHX,
FLTR and H-D Trikes

PM IS OFFERING BILLET ACCESSORIES FOR ONE OF MOST VISIBLE AREAS OF YOUR TOURING MOTORCYCLE - THE TOP OF THE TANK. SOLD INDIVIDUALLY OR AS A FAMILY DESIGN GROUP, WE ARE OFFERING REPLACEMENTS FOR YOUR IGNITION SWITCH, FUEL DOOR AND DASH INSERT WITH FIVE DESIGNS FROM OUR EXISTING DESIGN FAMILY OF PARTS: THE APEX, DRIVE, GRILL, MERC, AND SCALLOP DESIGN FAMILY OF PARTS. BOLTING THESE PARTS TO YOUR BIKE HAS GOT TO BE ONE OF THE MOST IMPACTFUL WAYS TO CUSTOMIZE YOUR MACHINE WITHOUT BREAKING YOUR BANK. NOTE THE APEX AND MERC PART GROUP COMES WITH THE SMOOTH DESIGN IGNITION SWITCHES.



DRIVE

GRILL

MERC

SCALLOP

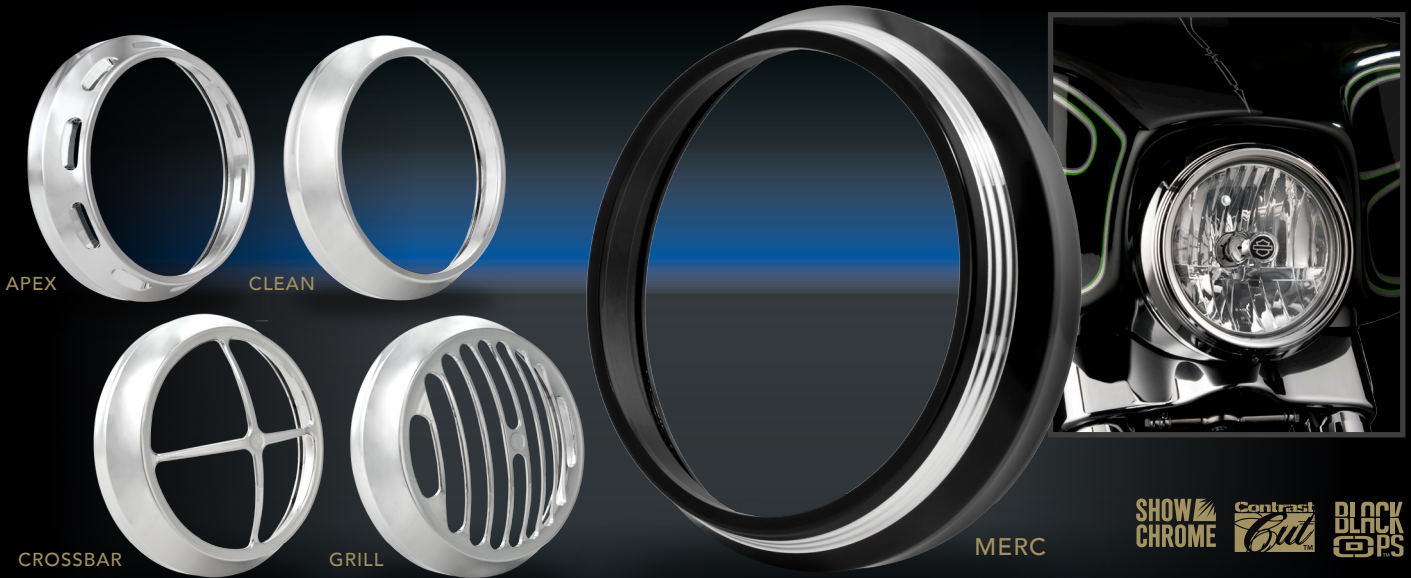
SHOW
CHROME

Contrast
Cut



HEADLIGHT BEZELS

1984-2016 FLHX, FLHR, & FLHTCU MODELS.



CHROME, CONTRAST CUT & BLACK OPS - \$179.95

PERFORMANCE MACHINE VISION SERIES HEADLIGHT BEZELS LEAD THE WAY WITH FIVE METICULOUSLY CRAFTED DESIGNS; THE GRILL, CROSSBAR, MERC, APEX, AND CLEAN WILL HAVE YOU SHEDDING THE STOCK PIECE FOR THESE CUSTOM HALOS IN A QUICK MINUTE. THE 7" BILLET BEZELS ARE COMPATIBLE WITH H-D DAYMAKER LED HEAD LAMPS AND DESIGNED TO MATE WITH FLHX, FLHR, AND FLHTCU MODELS IN CHROME, CONTRAST CUT AND BLACK OPS FINISHES.

HEADLIGHTS

1984-2016 FXST AND OTHER SELECT MODELS WITH THE USE OF MOUNTS AVAILABLE THROUGH J&P CYCLES®.

SHOW CHROME Contrast Cut BLACK OPS



PERFORMANCE MACHINE'S BILLET HEADLIGHTS ARE HEAD AND SHOULDERS ABOVE THE COMPETITION, EMPLOYING A DIAMOND REFLECTOR LENS OVER THE LATEST IN HALOGEN TECHNOLOGY TO MAKE YOUR FUTURE SHINE BRIGHT. AVAILABLE IN FIVE STYLES AND THREE FINISHES, THESE HEADLIGHTS ARE A PART OF THE EVER-EXPANDING LINE OF PERFORMANCE MACHINE ACCESSORIES. AVAILABLE FOR H-D BOTTOM MOUNT 1984-2016 FXST AND OTHER SELECT MODELS WITH THE USE OF MOUNTS AVAILABLE THROUGH J&P CYCLES®.

CHROME, CONTRAST CUT & BLACK OPS - \$449.95



1984-2016 FLH TOURING FRONT-END, INCLUDING FLHX TRIKES.

FORK SLIDERS



TECH



SLASH



MERC



FEATURING PERFORMANCE MACHINE'S UNRELENTING STYLE, PM SLIDER COVERS ARE MACHINED FROM BILLET ALUMINUM AND OFFERED IN CHROME, CONTRAST CUT AND BLACK OPS. CHOOSE FROM THE MERC STYLE WITH OUR TRADEMARKED RIBBED RINGS OR THE SLASH FEATURING PRECISELY MACHINED GROOVES WITH A DIAGONAL CUT WHERE THE SLIDER MEETS THE FORK LEGS.

CHROME, CONTRAST CUT & BLACK OPS - \$299.95/PAIR

LOWER FORK LEGS

FOR 2000-2007 FLT, FLHT, FLHX, FLTR & 2008-2016 FLHT, FLHR, FLHX, FLTR.



TECH

CHROME, BLACK ANO & CONTRAST CUT - \$619.95



AFTER OVER 40 YEARS OF BOLTING PM CALIPERS TO STOCK FRONT FORK LEGS WE'VE DEVELOPED A SUPERIOR SET OF LOWER LEGS TO COMPLIMENT OUR WHEELS AND BRAKING SYSTEMS. ARTFULLY SCULPTED FROM HEAT TREATED BILLET ALUMINUM, MACHINED PM ICON LOGO WITH A PIN-STRIPE DETAIL THAT EXTENDS THE LENGTH OF THE FORKS, AND A HIDDEN AXLE DESIGN ALL ADD UP TO THE PERFECT SET OF LEGS. COMBINE WITH PM SLIDER COVERS FOR A COMPLETE CUSTOM FRONT END. KIT CONTAINS AXLE, AXLE COVERS, L&R LEGS WITH CALIPER AND FENDER MOUNTS INSTALLED. CALIPER MOUNTS WILL ACCOMMODATE STOCK H-D CALIPERS OR PM CALIPERS FOR SINGLE OR DUAL DISC, INCLUDING OUR POWERFUL, RACE-INSPIRED 4-PISTON RADIAL MOUNT CALIPER THAT HAS BEEN A STAPLE IN OUR SPORTBIKE OFFERING FOR A DECADE. APPLICATIONS AVAILABLE FOR 2000-07 FLT, FLHT, FLHX, FLTR AND 2008-2016 FLHT, FLHR, FLHX, FLTR.



EXHAUST TIPS

VANCE & HINES, RHINEHART, SCREAMING EAGLE, SUPERTRAPP, AND KERKER PIPES IN 3.5" OR 4.0" DIAMETER. BASSANI SHORT AND LONG MEGAPHONE.

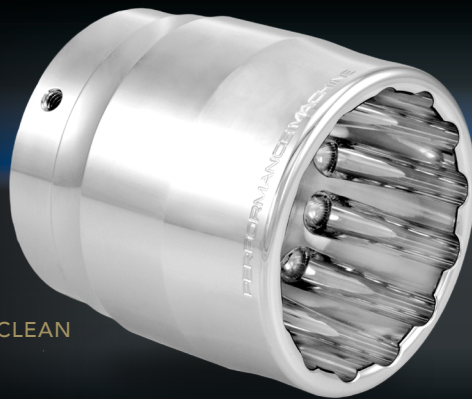


TECH 10



CHROME, CONTRAST CUT & BLACK OPS - \$129.95

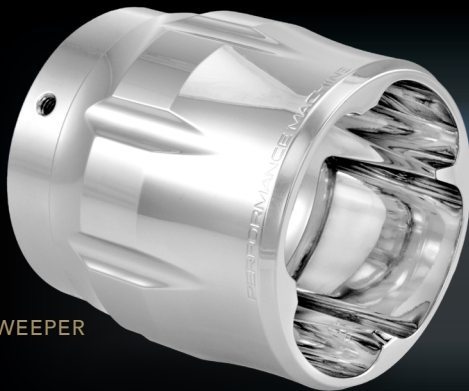
WE'VE TAKEN A SIMPLE, BILLET PIECE OF ALUMINUM AND TURNED IT INTO WORKS OF ART FOR YOUR EXHAUST. FIVE CUTTING-EDGE DESIGNS INCLUDING THE CLEAN, TECH 10, SLASH, SWEEPER AND THE HOT ROD INSPIRED MERC WILL SLIP-ON TO VANCE & HINES, RINEHART, SCREAMING EAGLE, SUPERTRAPP, AND KERKER PIPES IN 3.5" OR 4.0" DIAMETERS. PM TIPS WILL ALSO FIT BASSANI SHORT AND LONG MEGAPHONE APPLICATIONS. EACH TIP FEATURES MACHINED CUTS AND GROOVES, GIVING EACH ROUND DEPTH AND DIMENSION BOTH INSIDE AND OUT. NO MATTER WHAT ANGLE YOU FIND YOURSELF ADMIRING THESE TIPS, THEY'RE DEFINITELY SEXY. EACH TIP IS EMBELLISHED WITH THE PERFORMANCE MACHINE LOGO AND AVAILABLE IN CHROME AND CONTRAST CUT FINISH.



CLEAN



MERC



SWEEPER



SLASH

SHOW
CHROME

Contrast
Cut

BLACK
BLACK
OPS



1991-2016 BIG TWIN MODELS.

HORN COVERS



CHROME, CONTRAST CUT, CONTRAST CUT PLATINUM & BLACK OPS - \$129.95



ARRAY

CREATED WITH AN EYE ON STYLE, PERFORMANCE MACHINE HAS ADDED A LINE OF HORN COVERS TO HELP YOU IN YOUR QUEST FOR CUSTOM. PROVIDING THE OPTIONS YOU CRAVE IN THE TOO COOL DESIGNS YOU LOVE. IF YOU'RE WONDERING WHAT PURPOSE THESE PARTS SERVE TO THAT WE SAY THEY SERVE THE PURPOSE OF LOOKING GOOD, SOMETHING WE CAN ALL APPRECIATE. THESE CNC MACHINED BEAUTIES ARE AVAILABLE FOR 1991-2016 BIG TWIN MODELS.

SHOW CHROME

Contrast Cut

Contrast Cut PLATINUM

BLACK OPS



SCALLOP



MERC



BAG LATCHES

MOST 1984-2016 FLH MODELS.



DRIVE



SMOOTH

CHROME & CONTRAST CUT - \$149.95



FLUTED



SCALLOP

ARE YOU LOOKING TO CUSTOMIZE YOUR BIKE EFFECTIVELY AND EFFICIENTLY WITH YOUR TIME AND MONEY? THINK ABOUT ATTACHING A PAIR OF OUR DESIGN MACHINED LATCHES TO YOUR BAGS AND TURN SOMETHING ORDINARY INTO COOL LOOKING. PM LATCH COVERS UTILIZE OE LOCKING MECHANISM AND ARE EASY TO INSTALL WITH BASIC TOOLS.

FUEL & DUMMY CAPS

LATE 1996-2016 H-D MODELS.



ARRAY



GRILL



APEX
w/ LED Gauge



SCALLOP



MERC



FUEL & DUMMY CAPS - \$69.95

LED GAUGE CAPS - \$119.95

*LED lenses are clear and color shows only when illuminated.

A FUEL CAP SITS ON TOP OF THE TANK LIKE A CROWN ON A QUEEN'S HEAD. HARLEY-DAVIDSON MOTORCYCLES NEED TO BE HONORED WITH A PERFORMANCE MACHINE CUSTOM CROWN FOR THEIR FUEL TANKS. THROW AWAY THAT OEM PIECE OF CAP, AND SCREW-IN A PREMIUM PM COOL CAP FOR A HIGH-END LOOK OF ROYALTY, WITHOUT THE HIGH-END PRICE. CNC'D FROM AIRCRAFT GRADE ALUMINUM, OUR UNIQUE VENTED FUEL CAPS ARE AN INSTANT CUSTOM ADDITION TO 1996-UP H-DS AND COMPLIMENTS OUR CURRENT COVER LINE OF ACCESSORY DESIGNS. EACH DESIGN IS OFFERED IN A STANDARD FUEL CAP, FUEL DUMMY CAP, AND LED FUEL GAUGE. THE PM PROPRIETARY LED FUEL GAUGE IS USER PROGRAMMABLE FOR MULTIPLE APPLICATIONS AND FEATURES BRIGHT LED LIGHTS THAT ENERGIZE WHEN FULL AND SHUT OFF AS FUEL LEVEL DROPS.



WINDSCREEN TRIM



1998-2016 FLH

MERC

SCALLOP

HOLE SHOT

SHOW
CHROME

Contrast
Cut

BLACK
OPS

CHROME, CONTRAST CUT
& BLACK OPS - \$79.95

WITH A LEAVE NOTHING UNDONE PHILOSOPHY WE COULDN'T OVERLOOK THE NEED FOR CUSTOM WINDSCREEN TRIM TO DISTINGUISH YOUR FAIRING FROM THE SEA OF STOCK. CNC LASER CUT FROM 6061-T6 ALUMINUM AND PRECISION MACHINED FOR A PERFECT FIT THE SCALLOP, MERC, AND HOLE SHOT DESIGNS COMPLEMENT PM'S EVER GROWING LINE OF ACCESSORIES. AVAILABLE IN CHROME, CONTRAST CUT AND BLACK OPS FOR 1998-2016 FLH/T WITH CHROME PLATED HARDWARE.

SHOW
CHROME

Contrast
Cut

BLACK
OPS

2015-2016 FLTR

MERC

SCALLOP

HOLE SHOT

NEW FOR 2016

CHROME, CONTRAST CUT
& BLACK OPS - \$159.95

1998-2013 FLTR

MERC

SCALLOP

HOLE SHOT

CHROME, CONTRAST CUT
& BLACK OPS - \$159.95



LUGGED HANDLEBARS

**STANDARD - SOFTAIL,
DYNA & SPORTSTER**
10", 12", 14", 16" RISE
34.5", 35" WIDTH
7" PULLBACK

ROAD GLIDE
12", 14" RISE
36.5", 37" WIDTH
2.5" PULLBACK

STREET GLIDE
12", 14" RISE
36", 36.5" WIDTH
9" PULLBACK



**SHOW
CHROME**

**BLACK
POWDERCOAT**

BLACK POWDERCOAT - \$259.95
CHROME - \$349.95



TBW PLUG - \$6.95

PM'S DESIGN AND ENGINEERING TEAM SET OUT TO CREATE THE BEST HANDLEBARS ON THE MARKET WITH RELATIVELY SIMPLE CRITERIA; THEY HAVE TO BE STRONG, CLEAN, AND INNOVATIVE. USING CNC TUBE BENDING, LASER CUTTING, AND WELDING TECHNOLOGY WE DEVELOPED AN ARTISTICALLY SCULPTED CUT BLENDING THE 1.25" TUBING SMOOTHLY INTO THE UPPER 1.0" TUBING. DOUBLE WALL MANUFACTURING CREATES STRENGTH WHERE IT'S NEEDED BALANCING WEIGHT AND STYLE. PM'S LUGGED BARS WERE SENT THROUGH OUR DESTRUCTIVE TEST LAB INSURING THESE ARE TRULY THE BEST ON THE MARKET. GRAB YOURS IN SHOW CHROME OR GLOSS BLACK POWDERCOAT FINISHES FOR TBW AND NON-TBW APPLICATIONS.

EXTENDED KICKSTAND

MOST 1984-2016 FLH MODELS.



**SHOW
CHROME**



CHROME - \$69.95

RUNNING A 21" OR 23" FRONT WHEEL? YOU MAY WANT TO CONSIDER OUR EXTENDED KICKSTAND. CRAFTED FROM FORGED STEEL WITH A CHROME FINISH, PM'S 1" EXTENDED KICKSTAND IS A DIRECT REPLACEMENT FOR THE OEM UNIT. IT WILL GIVE YOU BACK THE COUPLE DEGREES THAT YOU CAN LOSE WITH ANY CUSTOMIZATION MAKING IT EASIER TO LEAN YOUR BIKE BACK TO RIDING POSITION.



MOUNTS TO PM HAND CONTROLS AS WELL AS STOCK AND MOST AFTERMARKET CONTROLS.

VISION SERIES MIRRORS



SHOW
CHROME
Contrast
Cut™

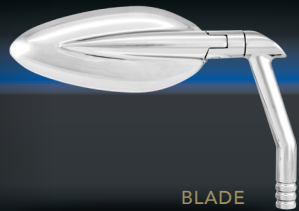


ARROW

CHROME & CONTRAST CUT - \$69.95/EACH



ARROW XL



BLADE



OVAL



ROUND

LOOKING BACK HAS NEVER LOOKED SO GOOD! PM VISION SERIES MIRRORS ARE DESIGNED TO PROVIDE AMPLE VISIBILITY SIDE TO SIDE AND BEHIND WHERE OUR OWN PERIPHERAL VISION CALLS IT QUITS. THE VISION SERIES LINE OFFERS AN EYEFUL WITH FIVE UNIQUE MIRROR HEADS AND SMART AMBIDEXTROUS STEMS TO SUIT YOUR TASTE AND RIDING STYLE. FULLY ADJUSTABLE AND VIBRATION TESTED SO YOU NEVER LOSE SIGHT THE ARROW, ARROW XL, OVAL, ROUND, AND BLADE MIRRORS WILL MOUNT TO PM HAND CONTROLS AS WELL AS STOCK AND MOST AFTERMARKET CONTROLS. MIRRORS ARE SOLD SEPARATELY AND ARE AVAILABLE IN CHROME AND CONTRAST CUT FINISHES.

TORQUE MIRROR

MOUNTS TO PM HAND CONTROLS AS WELL AS STOCK AND MOST AFTERMARKET CONTROLS.



SHOW
CHROME
BLACK
ANO

PM TORQUE MIRRORS FEATURE A COMPLETELY UNIQUE MIRROR HEAD WITH A MATCHING MACHINED ALUMINUM STEM. BOLTS TO ALL PM HAND CONTROLS, AS WELL AS STOCK AND MANY OTHER AFTERMARKET CONTROLS. LEFT AND RIGHT MIRRORS ARE SOLD SEPARATELY.

CHROME & BLACK ANO - \$69.95/EACH

FL MIRROR

1996-2016 FLH MODELS.



PERFORMANCE MACHINE FL MIRRORS ARE DESIGNED FOR OPTIMAL VIEW WHILE STILL FLOWING PERFECTLY WITH THE LINES OF THE FAIRING. INCLUDES A COMPLETE MOUNTING SYSTEM.

CHROME & BLACK ANO - \$149.95/PAIR



PEGS

MATCHING FOOT PEGS ARE DESIGNED TO MOUNT TO STOCK H-D CLEVIS. MATCHING TOE PEGS ARE SOLD SEPARATELY.



OVERDRIVE



- CONTOUR & ELITE PEGS - \$99.95
- MERC & APEX PEGS - \$119.95
- OVERDRIVE PEGS - \$129.95
- XLS & CONTOUR XL PEGS - \$149.95
- CONTOUR PEGS (FOR PM FOOT CONTROLS) - \$199.95
- CONTOUR & ELITE TOE PEG - \$20.00
- XLS TOE PEG - \$27.00
- OVERDRIVE, MERC & APEX TOE PEG - \$37.00

PERFORMANCE MACHINE FOOT PEGS ARE DESTINED TO BE PAIRED WITH PM GRIPS. WE HAVE TAKEN THE STYLING AND COMFORT OF PM GRIPS AND DEVELOPED A LINE OF PEGS THAT MOUNT DIRECTLY TO YOUR STOCK H-D CLEVIS AND WILL HAVE YOU PUTTING ON THE MILES EFFORTLESSLY.



MERC



APEX



ELITE



XLS



RUBBER WRAPPED



CONTOUR



PM GRIPS ARE OFFERED FOR 1" BARS AND ARE ALSO AVAILABLE TO FIT MODELS WITH ELECTRONIC THROTTLE.

GRIPS



OVERDRIVE

NEW FOR 2016 ARE A MATCHING LINE OF HANDLE GRIPS, FOOT PEGS, AND TOE PEGS IN THE POWER HUNGRY NEW OVERDRIVE DESIGN. THIS NEW ADDITION TO THE LEGENDARY PM GRIP AND PEG LINEUP WILL BE SURE TO HAVE YOU ITCHING TO ROLL THE THROTTLE BACK AND HIT THE OPEN ROAD IN OVERDRIVE. THE FACETTED-MACHINED ACCENTS WILL GRAB EVERYONE'S ATTENTION WHILE YOU RIP THROUGH THE GEARS ON YOUR FAVORITE STRETCH OF HIGHWAY.

- CONTOUR & ELITE GRIPS - \$99.95
- MERC & APEX GRIPS - \$119.95
- OVERDRIVE GRIPS - \$129.95
- XLS & CONTOUR XL GRIPS - \$149.95

OUR COMPLETE LINE OF GRIPS ARE OFFERED FOR 1" BARS AND ARE AVAILABLE TO FIT MODELS WITH ELECTRONIC THROTTLE AND SELECT METRIC APPLICATIONS.

SHOW
CHROME

Contrast
Cut™

BLACK
ANO



MERC



APEX



ELITE



CONTOUR



CONTOUR XL



XLS



CHOOSE
YOUR
OWN
WAY



JET



THE JET AIR CLEANER WAS CREATIVELY FORMED FOR ULTIMATE FUNCTION SO YOU CAN HAVE YOUR CAKE AND EAT IT TOO. IT'S UNIQUE, INNOVATIVE BODY MOUNTS TO EITHER A SPEEDY HORIZONTAL POSITION OR A STYLISH VERTICAL VERSION - SO YOU DECIDE.

CHROME, CONTRAST CUT & BLACK OPS - \$499.95

1993-2016 TWIN CAM & EVO
2008-2016 THROTTLE BY WIRE
1991-2016 XL SPORTSTER



SHOW CHROME

Contrast Cut

BLACK OPS

PM AIR CLEANERS ARE NOT LEGAL FOR SALE ON POLLUTION CONTROLLED VEHICLES IN CALIFORNIA OR STATES ADOPTING CALIFORNIA EMISSIONS STANDARDS



AIR CLEANERS

1993-2016 TWIN CAM & EVO
2008-2016 THROTTLE BY WIRE
1991-2016 XL SPORTSTER



DRIVE



CHROME, CONTRAST CUT, CONTRAST CUT PLATINUM & BLACK OPS - \$419.95

SHOW CHROME

Contrast Cut

Contrast Cut PLATINUM

BLACK OPS

WE WERE INSPIRED TO DESIGN A SERIES OF AIR CLEANERS THAT BOASTS AN INDUSTRIAL POLYGON SHAPE TO FOLLOW THE LINES OF THE V-TWIN WITH DETAIL ASCENTS TO BE ORGANIC TO THE MECHANICAL LOOKING NATURE OF THE BEAUTIFUL ENGINE AND DRIVETRAIN. CHOOSE FROM THREE DESIGNS AND FOUR FINISHES TO MAKE YOUR MOTORCYCLE A STATEMENT OF CUSTOM.



SCALLOP



ARRAY



PM AIR CLEANERS ARE NOT LEGAL FOR SALE ON POLLUTION CONTROLLED VEHICLES IN CALIFORNIA OR STATES ADOPTING CALIFORNIA EMISSIONS STANDARDS



FASTAIR INTAKE

1993-2016 TWIN CAM & EVO
 2008-2016 THROTTLE BY WIRE
 1991-2016 XL SPORTSTER
 1993-2006 BIG TWIN W/S&S E/G CARB

CHROME, CONTRAST
 CUT & CONTRAST CUT
 HYBRID - \$499.95



PM'S FASTAIR INTAKE UTILIZES THE HIGHEST QUALITY AND BEST PERFORMING K&N FILTER ELEMENT ALLOWING A 10.21 HP INCREASE ON A STOCK HARLEY DAVIDSON. NOT ONLY DOES THIS INTAKE MAKE HORSEPOWER BUT IT THE MOST INNOVATIVE AND AGGRESSIVE LOOKING INTAKE ON THE MARKET. LEAVE IT TO PM TO RAISE THE BAR BY CREATING BEAUTIFUL BILLET PIECES LITERALLY LACED TOGETHER TO BEAUTIFY THAT HIGH PERFORMANCE AIR FILTER. WE ALSO ADDED PM'S PROVEN INTERNAL CRANKCASE BREATHER SYSTEM TO CREATE A CLEAN LOOK. ONCE AGAIN PM HAS CREATED A TRULY INNOVATIVE AND UNIQUE PIECE TO TAKE YOUR BIKE TO THE NEXT LEVEL.

THROTTLE SERVO COVER



CHROME & BLACK ANO - \$69.95

THE THROTTLE SERVO COVER IS JUST THAT; A SIMPLE, ATTRACTIVE COVER THAT MASKS THE UNSIGHTLY THROTTLE SERVO ON THROTTLE BY WIRE MODELS. THE PM PIECE IS A UNIQUE, SLIM, 2-PIECE DESIGN WITH A UNIVERSAL FIT FOR ALL PM AIR CLEANERS. COVERS ARE EASY TO INSTALL AND AVAILABLE IN CHROME AND BLACK ANODIZED FINISHES.

PM AIR CLEANERS ARE NOT LEGAL FOR SALE ON POLLUTION CONTROLLED VEHICLES IN CALIFORNIA OR STATES ADOPTING CALIFORNIA EMISSIONS STANDARDS



MAX HP

1993-2016 TWIN CAM & EVO
2008-2016 THROTTLE BY WIRE
1991-2016 XL SPORTSTER



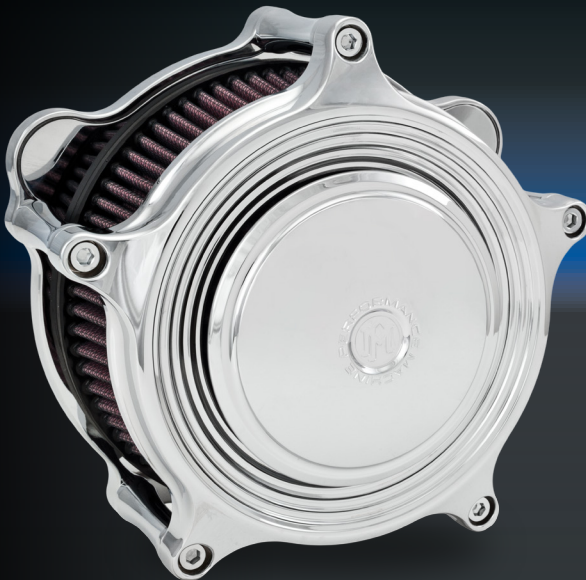
CHROME, CONTRAST CUT & BLACK OPS - \$449.95



THE MAX HP AIR CLEANER ISN'T JUST ANOTHER PRETTY BOLT-ON ACCESSORY THAT LACKS SUBSTANCE. THE NEWEST ADDITION TO OUR AIR CLEANER LINE-UP FEATURES AN INNOVATIVE, CONICAL SHAPE FOR DRAMATICALLY IMPROVED KNEE CLEARANCE, AN INTERNAL POWER CONE DESIGN FOR SMOOTH, LAMINAR AIR FLOW, PLUS A HIGH FLOW REUSABLE AIR FILTER TO GIVE IT LIFE. LIGHTWEIGHT ALUMINUM DESIGN, INTERNAL RUBBER BREATHER TUBES TO ELIMINATE OIL LEAKAGE AND EASY INSTALLATION ALL SUPPORT THE MAX HP'S STUNNING GOOD LOOKS. AND, IT'S MADE RIGHT HERE IN THE USA IN CHROME, CONTRAST CUT, AND BLACK OPS FINISHES WITH GASKETS AND HARDWARE INCLUDED.

MERC

1993-2016 TWIN CAM & EVO
2008-2016 THROTTLE BY WIRE
1991-2016 XL SPORTSTER
1993-2006 BIG TWIN W/S&S E/G CARB



CHROME, CONTRAST CUT & BLACK OPS - \$449.95



PERFORMANCE MACHINE DOES NOT BELIEVE IN RESTING ON OUR LAURELS, PREFERRED INSTEAD TO PUSH THE ENVELOPE WITH NEW DESIGNS AND PRODUCTS. THE FACT IS FRONT AND CENTER IN OUR ONGOING QUEST TO IMPROVE AND EXPAND UPON OUR LINE OF AIR CLEANERS. THE SUPER GAS MERC AIR CLEANER CRUISES FIRMLY INTO NOSTALGIA TERRITORY, ADDING SOME HOT ROD FLAIR TO THE STYLING OF OUR ORIGINAL SUPER GAS AIR CLEANER. WITH CLEAN LINES AND MORE CURVES THAN A PIN-UP, THIS PIECE FEATURES RIBBED CONCENTRIC CIRCLES AND THE PERFORMANCE MACHINE LOGO MACHINED INTO THE CENTER. EQUIPPED WITH A K&N AIR FILTER, THE MERC OFFERS OPTIMAL AIR FLOW AND MORE HORSEPOWER THAN THE STOCK ALTERNATIVE.



PM AIR CLEANERS ARE NOT LEGAL FOR SALE ON POLLUTION CONTROLLED VEHICLES IN CALIFORNIA OR STATES ADOPTING CALIFORNIA EMISSIONS STANDARDS



SHOW
CHROME

Contrast
CUT™

Contrast
CUT™
PLATINUM

1993-2016 TWIN CAM & EVO
2008-2016 THROTTLE BY WIRE
1991-2016 XL SPORTSTER
1993-2006 BIG TWIN W/S&S E/G CARB

SUPER GAS



UNIVERSAL SUPER GAS

FIND YOUR FACEPLATE

IT'S MATCHED

- UNIVERSAL SUPER GAS - \$349.95
- SUPER GAS FACEPLATE - \$95.00
- SCREAMIN EAGLE/NESS UPGRADE KIT - \$25.00
- 58MM THROTTLE BODY UPGRADE KIT - \$125.00
- PULLOVER RAIN SOCK - \$29.95
- RAIN SOCK - \$29.95
- SCRUB BAG - \$32.00



PULLOVER RAIN SOCK



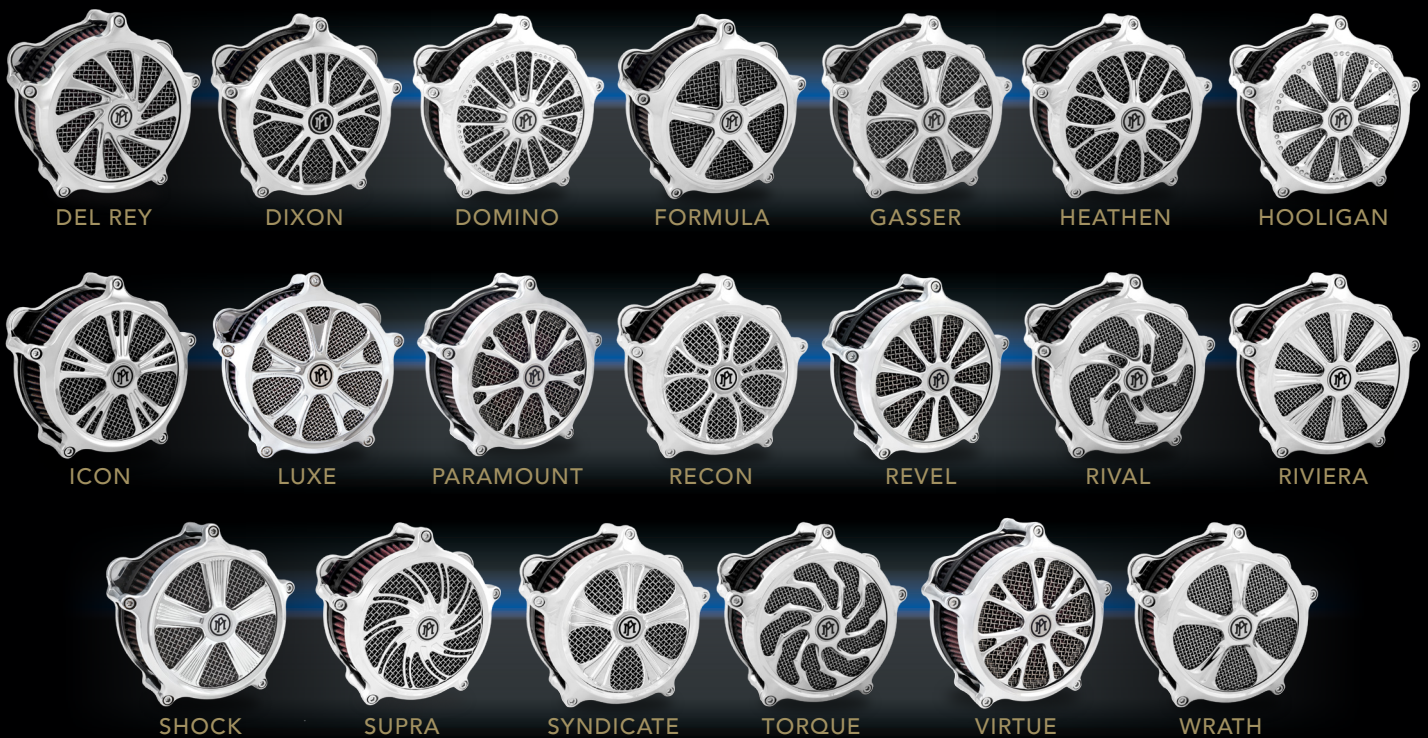
SCRUB BAG



RAIN SOCK

THE SUPER GAS AIR CLEANER FEATURES A VERSATILE DESIGN THAT ACCEPTS INTERCHANGEABLE FACEPLATES DESIGN MATCHED TO PERFORMANCE MACHINE WHEELS. A K&N FILTER BEHIND A STAINLESS STEEL WIRE MESH SCREEN ALLOW HIGH VOLUME AIR FLOW RESULTING IN INCREASED HORSEPOWER. THE SUPER GAS AIR CLEANER IS CNC-MACHINED FROM BILLET ALUMINUM WITH BUILT-IN CRANK CASE BREATHERS AND COMES WITH CHROME HARDWARE.

THE SCREAMIN' EAGLE/NESS UPGRADE KIT ADAPTS A PM DESIGNED MATCHED FACEPLATE TO FIT THE SE/NESS AIR CLEANERS. THE UPGRADE KIT INCLUDES THE MESH INSERT, SPACER, HARDWARE, AND THE PM LOGO BADGE. FACEPLATES ARE SOLD SEPARATELY.



DEL REY

DIXON

DOMINO

FORMULA

GASSER

HEATHEN

HOOLIGAN

ICON

LUXE

PARAMOUNT

RECON

REVEL

RIVAL

RIVIERA

SHOCK

SUPRA

SYNDICATE

TORQUE

VIRTUE

WRATH

PM SUPER GAS AIR CLEANERS AND DESIGN MATCHED FACEPLATES ARE SOLD SEPARATELY. ORDER THE PM UNIVERSAL AIR CLEANER IN CHROME OR BLACK AND THEN CHOOSE A DESIGN MATCHED FACEPLATE TO COMPLIMENT YOUR WHEELS.

PM AIR CLEANERS ARE NOT LEGAL FOR SALE ON POLLUTION CONTROLLED VEHICLES IN CALIFORNIA OR STATES ADOPTING CALIFORNIA EMISSIONS STANDARDS



RADIAL MOUNT CALIPERS & BRACKETS

FRONT 4 PISTON RADIAL MOUNT CALIPER & BRACKET



SHOW
CHROME

Contrast
Cut



CHROME (CALIPER) - \$439.95

CONTRAST CUT (CALIPER) - \$429.95

CHROME (BRACKET) - \$125.00

BLACK ANO (BRACKET) - \$125.00

HARDWARE KIT REQUIRED AT EXTRA CHARGE. APPLICATION SHOWN DOES NOT REQUIRE A BRACKET.

RADIAL MOUNT CALIPERS... THEY'RE NOT JUST FOR SPORTBIKES ANYMORE!

PM RADIAL MOUNT CALIPERS HAVE SPENT SEVERAL YEARS ON THE GP RACE CIRCUIT AND HAVE BEEN AVAILABLE FOR SPORTBIKES AND CUSTOMS FOR QUITE A WHILE. NOW YOU CAN UPGRADE YOUR 2000-UP HARLEY-DAVIDSON WITH THE PERFORMANCE ADVANTAGE OF PM RADIAL MOUNT CALIPERS. ANCHORING THE CALIPER NEXT TO THE ROTOR'S ENTRANCE POINT AND EXIT POINT YIELDS A CALIPER THAT IS STIFFER THAN TRADITIONAL CALIPERS AND HOLDS A MORE PRECISE CALIPER TO ROTOR ALIGNMENT. THE FOUR BRAKE PAD RACE STYLE DESIGN PROVIDES IMPROVED PAD CONTACT, MINIMIZED HEAT BUILD UP, IMPROVED BRAKING FEEL, AND MORE BITE WHEN YOU NEED IT! THE PM RADIAL MOUNT CALIPER IS HIGHLY ENGINEERED TO REDUCE FLEX AND OFFERS GREAT EXOTHERMIC CAPABILITIES WHICH RESULTS IN A PHENOMENAL UPGRADE TO STOCK CALIPERS. BY SIMPLY USING ONE OF OUR RADIAL MOUNT ADAPTER KITS, ANY 2000-UP HARLEY-DAVIDSON CAN EASILY BE CONVERTED TO PM RADIAL MOUNT BRAKING TECHNOLOGY ON APPLICATIONS WITH 11.5", 11.8", OR 13" ROTORS (EXCEPT SPRINGER MODELS). ADAPTER BRACKETS ARE AVAILABLE FOR LEFT AND RIGHT SIDE FOR SINGLE AND DUAL DISC CONFIGURATIONS.

REAR 4 PISTON RADIAL MOUNT CALIPER WITH BRACKET



SHOW
CHROME

Contrast
Cut

CHROME (CALIPER) - \$749.95

CONTRAST CUT (CALIPER) - \$749.95



FOR MOST 1984-2016 MODELS.

VINTAGE BRAKE CALIPERS



MACHINE OPS™

CHROME (CALIPER ONLY) - \$439.95

BLACK OPS & MACHINE OPS (CALIPER ONLY) - \$429.95

PERFORMANCE MACHINE HAS BROUGHT OUR MODERN BRAKING TECHNOLOGY TO ONE OF THE ORIGINAL CALIPERS THAT PUT US ON THE MAP FOR AMERICAN MADE H-D BRAKING SYSTEMS BACK IN THE SEVENTIES. THE VINTAGE CALIPER GETS ITS BRAKING POWER FROM PM'S PROVEN 4-PISTON INTERNALS, BUT WE'VE TAKEN THE STYLING CUES FROM OUR ORIGINAL DUAL ACTION CAST CALIPER. THE REMINISCENT, CNC-MACHINED FINS GIVE THE CALIPER ITS VINTAGE STYLE WHILE KEEPING THE CALIPER COOL AND PROVIDING OPTIMAL BRAKING POWER WITH NO FLEX. DESIGNED WITH THE VINTAGE CALIPER IN MIND, THE MACHINE OPS™ FINISH FEATURES A COMBINATION OF OUR INNOVATIVE OPS TREATMENT AND OUR STUNNING MACHINE FINISH COVERED WITH BRIGHT CLEAR ANO FOR A VINTAGE LOOK THAT IS DURABLE AND EASY TO CARE FOR. CHOOSE YOUR ACCENT BOLT FROM THE AVAILABLE CHROME FINISH, OR BLACK, RED AND BLUE ANO COLORS. OUR VINTAGE CALIPERS ARE DESIGNED TO BE USED WITH PM BRACKETS FOR OUR MOST POPULAR FRONT AND REAR APPLICATIONS.

BRACKETRY NOT PICTURED.



BLACK OPS™



SHOW CHROME™

SHOW CHROME BLACK OPS MACHINE OPS



FRONT BRAKE CALIPERS

FOR MOST 1984-2016 MODELS.

4 PISTON DIFFERENTIAL BORE CALIPERS



POLISHED - \$399.95
CHROME, BLACK ANO, CONTRAST
CUT & BLACK OPS - \$449.95

PERFECT POLISH SHOW CHROME BLACK ANO Contrast Cut BLACK OPS

DIFFERENTIAL BORE TECHNOLOGY HAS BEEN APPLIED TO THESE 6 AND 4 PISTON CALIPERS - MAKING THEM THE MOST POWERFUL AND STYLISH BRAKES AVAILABLE FOR NEW GENERATION BIKES. OUR FAMOUS PM ICON LOGO IS MACHINED ON THE CALIPER TO LET ON-LOOKERS RECOGNIZE YOU'RE STOPPING IN STYLE! THESE BEAUTIES COME IN FIVE DIFFERENT FINISHES TO SUIT YOUR NEEDS.

6 PISTON DIFFERENTIAL BORE CALIPERS



POLISHED - \$449.95
CHROME, BLACK ANO, CONTRAST
CUT & BLACK OPS - \$499.95

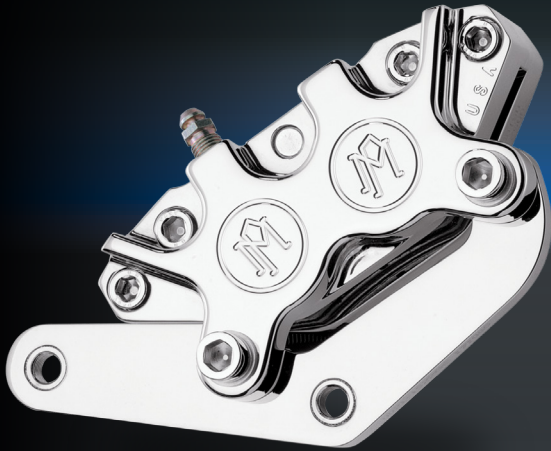
PERFECT POLISH SHOW CHROME BLACK ANO Contrast Cut BLACK OPS



FRONT BRAKE CALIPERS

4 PISTON CLASSIC & BRACKET

1984-1999 FX, XL & FLST MODELS.



THE ORIGINAL 4 PISTON BILLET CALIPER AND BRACKET THAT PUT PM IN THE BRAKE BUSINESS OFFERS SUPERIOR BRAKING POWER.

POLISH - \$399.95
 CHROME, BLACK ANO, CONTRAST CUT & BLACK OPS - \$449.95

4 PISTON DIRECT BOLT-ON

2008-2016 FLH/T, 2006-2016 V-ROD, 2014-16 XL & 2015-16 SOFTAIL MODELS.



PM'S ORIGINAL 4 PISTON CALIPER UPDATED TO A DIRECT BOLT-ON APPLICATION IS SPECIFICALLY ENGINEERED FOR USE WITH STOCK BRAKE MASTER CYLINDER ON SELECT LATE MODEL APPLICATIONS.

POLISH - \$399.95
 CHROME, BLACK ANO, CONTRAST CUT & BLACK OPS - \$449.95

4 PISTON SPRINGER & BRACKET

1988-2006 SPRINGER SOFTAIL.



PM'S 4 PISTON CALIPER AND BRACKET HAS BEEN ADAPTED FOR SPRINGER APPLICATIONS.

POLISH - \$449.95
 CHROME, BLACK ANO, CONTRAST CUT & BLACK OPS - \$539.95

2 PISTON & BRACKET

CUSTOM APPLICATIONS.



PM'S 2 PISTON CALIPER IS DESIGNED FOR THE CUSTOM BIKE BUILDER.

POLISH - \$295.00
 CONTRAST CUT - \$345.00

GO TO PERFORMANCEMACHINE.COM AND DISCOVER MORE CALIPERS FOR YOUR MOTORCYCLE.



REAR BRAKE CALIPERS

PERFECT POLISH SHOW CHROME BLACK ANO Contrast Cut BLACK OPS

4 PISTON DIFF. BORE & BRACKET 2000-2003 SPORTSTER.



DIFFERENTIAL BORE TECHNOLOGY COMBINED WITH A SOLID BILLET ALUMINUM BRACKET PROVIDES INCOMPARABLE BRAKING PERFORMANCE FOR THE SPORTSTER.

POLISH - \$449.95
CHROME, BLACK ANO, CONTRAST
CUT & BLACK OPS - \$499.95

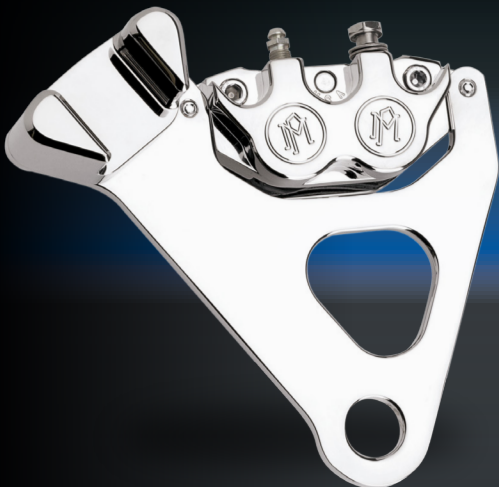
4 PISTON DIFF. BORE & BRACKET 2002-2016 VRSC & 2000-2016 FLH MODELS.



PM'S 4 PISTON DIFFERENTIAL BORE CALIPER COMBINED WITH A MACHINED ALUMINUM BRACKET MAKE FOR A POWERFUL BRAKE SYSTEM REQUIRED FOR TOURING AND V-ROD MODELS.

POLISH - \$449.95
CHROME, BLACK ANO, CONTRAST
CUT & BLACK OPS - \$549.95

4 PISTON CALIPER & BRACKET 2005-2016 SPORTSTER.



PM'S POWERFUL CALIPER AND BRACKET COMBO ADAPTED TO FIT LATE MODEL SPORTSTERS.

POLISH - \$449.95
CHROME, BLACK ANO, CONTRAST
CUT & BLACK OPS - \$499.95

4 PISTON CLASSIC & BRACKET 1991-2016 DYNA.



DESIGNED SPECIFICALLY FOR THE DYNA, THIS BRACKET TOPPED WITH THE CLASSIC PM 4 PISTON CALIPER, PROVIDE IMPROVED BRAKING PERFORMANCE OVER STOCK.

POLISH - \$449.95
CHROME, BLACK ANO, CONTRAST
CUT & BLACK OPS - \$549.95



GO TO PERFORMANCEMACHINE.COM AND DISCOVER MORE CALIPERS FOR YOUR MOTORCYCLE.

REAR BRAKE CALIPERS

4 PISTON INTEGRATED DIFF. BORE

2006-2016 SOFTAIL MODELS WITH 200MM TIRE & 1987-2006 STANDARD SOFTAIL MODELS.



THE ULTIMATE REAR BRAKE FOR THE H-D SOFTAIL. FOUR DIFFERENTIAL BORE SIZE PISTONS ARE WRAPPED IN A UNIQUE FORGED ALUMINUM INTEGRATED CALIPER/BRAKET CREATING POWERFUL AND CONSISTENT BRAKING.

POLISH - \$549.95
CHROME, BLACK ANO, CONTRAST CUT & BLACK OPS - \$599.95

4 PISTON CLASSIC & BRACKET

1987-2006 FXST & FLST.



PM'S TIME TESTED 4 PISTON CALIPER AND BILLET BRACKET ARE THE IDEAL REAR BRAKE SYSTEM FOR LATE MODEL SOFTAILS.

POLISH - \$499.95
CHROME, BLACK ANO, CONTRAST CUT & BLACK OPS - \$549.95

4 PISTON DRIVE-SIDE BRAKE SYSTEM

PM PHATAIL KIT, SOFTAIL & CUSTOM APPLICATIONS.



COMPLETELY CONCEALED BEHIND THE BELT SPROCKET, PM'S STATE-OF-THE-ART BRAKE SYSTEM UTILIZES OUR CLASSIC 4 PISTON CALIPER AND SPECIALLY CONSTRUCTED BILLET ALUMINUM BRACKET

POLISH - \$749.95
CHROME, BLACK ANO, CONTRAST CUT - \$799.95

4 PISTON SPROCKET-BRAKE SYSTEM

LEFT OR RIGHT SIDE CUSTOM APPLICATIONS.



PM HAS DEVELOPED A STATE-OF-THE-ART SPROCKET BRAKE FOR THE CUSTOM BUILDER UTILIZING PM'S PROVEN 4 PISTON CALIPER WITH A STAINLESS STEEL SPROCKET DISC.

POLISH - \$749.95
CHROME, BLACK ANO, CONTRAST CUT & BLACK OPS - \$799.95
SPROCKET DISC - \$399.95
BOLT KIT - \$10.00

GO TO PERFORMANCEMACHINE.COM AND DISCOVER MORE CALIPERS FOR YOUR MOTORCYCLE.



CONTOUR FORWARD CONTROLS

STANDARD AND 2" EXTENDED FOR 1984-2016 SOFTAIL.
STANDARD FITMENT FOR 2002-2007 V-ROD,
CUSTOMS AND 1991-2016 DYNA MODELS.



PERFECT POLISH SHOW CHROME BLACK ANO Contrast Cut

POLISHED - \$899.95 CHROME, BLACK ANO & CONTRAST CUT - \$999.95

PM CONTOUR FOOT CONTROLS ARE DESIGNED TO WORK WITH PM BRAKE SYSTEMS AS WELL AS OEM AND OTHER AFTERMARKET BRAKES. PM CONTROLS ARE MACHINED FROM BILLET ALUMINUM WITH PM'S PROVEN MASTER CYLINDER, PEGS WITH NON-SLIP RUBBER, AND ARE AVAILABLE FOR STOCK KICKSTANDS AND CUSTOM APPLICATIONS.

REAR MASTER CYLINDERS



2000-2016 FLST
2000-2007 FLH



2008-2016 FLH

POLISHED - \$279.95
CHROME, BLACK ANO &
CONTRAST CUT - \$299.95

PERFECT POLISH SHOW CHROME BLACK ANO Contrast Cut



PERFORMANCE MACHINE'S PROVEN CONTOUR MASTER CYLINDER IS DESIGNED AS A DIRECT REPLACEMENT FOR 2000 TO 2016 FLH AND FLST MODELS. DESIGNED TO WORK WITH STOCK OR PM BRAKE CALIPERS.

1984-2016 FL MODELS.

FLOORBOARDS & LEVERS

SUPERLIGHT

PASSENGER

RIDER

SHOW CHROME
Contrast Cut

RIDER CHROME, CONTRAST CUT - \$449.95
PASSENGER CHROME, CONTRAST CUT - \$379.95

OUR CONTOUR FLOORBOARDS HAVE SET THE STANDARD FOR AFTERMARKET HARLEY BOARDS FOR A LONG TIME. NOW NEW FOR 2016, THE F.T.Z. AND SUPERLIGHT RIDER FLOORBOARDS LAY DOWN A BIG PLATFORM FOR BIG BOOTS AND PLENTY OF FOOT ROOM ON THOSE LONG RIDES TO STRETCH OUT. THE F.T.Z. DESIGN'S BEST FEATURE IS THE VIBRATION ISOLATING FLOATING TREAD ZONE WHICH IS NEATLY HIDDEN IN THIS UNIQUE DESIGN. THE KNURLED RUBBER INSERT PROVIDES A NON-SLIP SURFACE AND FURTHER REDUCES VIBRATION. YOU GET GREAT PM LOOKS, EXTENDED FOOT ROOM AND THE VIBRATION DAMPENING OF A FLOATING FLOORBOARD. RIDING IN STYLE AND COMFORT COMES STANDARD. THESE BIG RIDER BOARDS WILL BOLT TO STOCK MOUNTS ON 1984-2016 FLH/T TOURING MODELS, 1984-2016 FLST/FLS AND 2012-2016 FLD MODELS. MATCHING PM PASSENGER FLOORBOARDS FIT 1993-2016 FLH/T MODELS WITH STOCK PASSENGER FLOORBOARD MOUNTS.

CONTOUR

SHOW CHROME
BLACK ANO

PASSENGER

RIDER

RIDER CHROME, BLACK ANO - \$399.95
PASSENGER CHROME, BLACK ANO - \$379.95

F.T.Z.

SHOW CHROME
Contrast Cut

PASSENGER

RIDER

RIDER CHROME, CONTRAST CUT - \$499.95
PASSENGER CHROME, CONTRAST CUT - \$349.95

BRAKE LEVER

CHROME, BLACK ANO,
CONTRAST CUT
(W/ SPACER) - \$179.95

SHOW CHROME
BLACK ANO
Contrast Cut

HEEL/TOE SHIFT LEVER

CHROME, BLACK ANO, CONTRAST CUT (W/ SPACER) - \$199.95
TOE SHIFT LEVER ONLY (W/ SPACER) - \$129.95

SHOW CHROME
BLACK ANO
Contrast Cut



CONTOUR HAND CONTROLS

HYDRAULIC CLUTCH MASTER CYLINDER



POLISHED - \$349.95
CHROME, BLACK ANO, CONTRAST CUT & BLACK OPS - \$369.95

HYDRAULIC BRAKE MASTER CYLINDER

POLISHED - \$349.95
CHROME, BLACK ANO, CONTRAST CUT & BLACK OPS - \$369.95

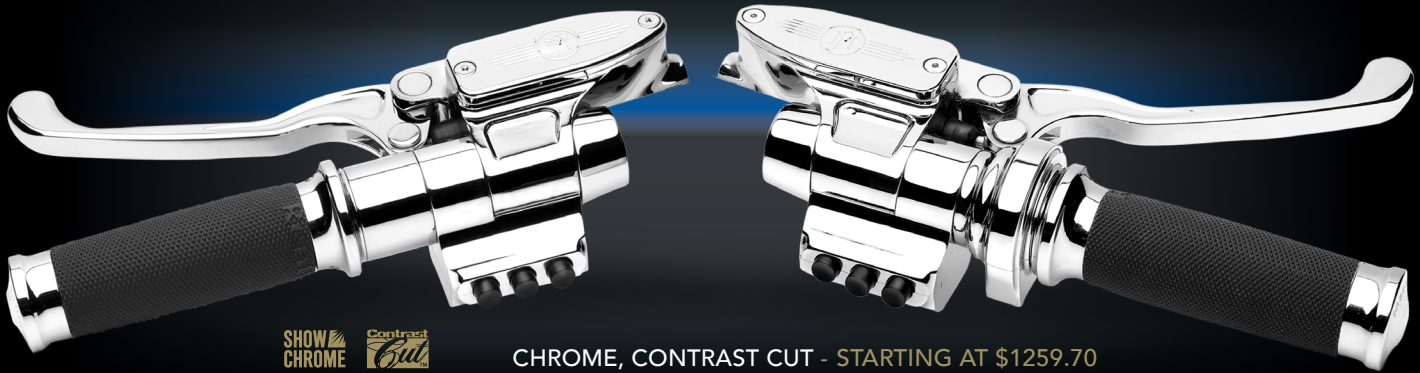
PERFECT POLISH SHOW CHROME BLACK ANO Contrast Cut BLACK OPS

CABLE CLUTCH LEVER



POLISHED - \$249.95
CHROME & BLACK ANO - \$269.95

COMPLETE HAND CONTROL SETS



SHOW CHROME Contrast Cut

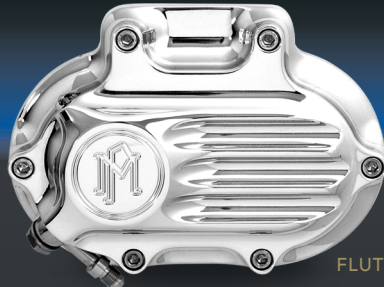
CHROME, CONTRAST CUT - STARTING AT \$1259.70

ALL PM CLUTCH LEVER ASSEMBLIES AND CLUTCH MASTER CYLINDERS ARE CNC-MACHINED FROM BILLET ALUMINUM. THE 11/16" BORE FEATURES A HARD ANODIZED FINISH TO ELIMINATE WEAR. AVAILABLE WITH STARTER INTERRUPT SWITCH (SOLD SEPARATELY) FOR LATE MODEL H-D'S. PM HYDRAULIC BRAKE MASTER CYLINDER FEATURES A CNC MACHINED ONE-PIECE BODY WITH REFINED INTERNALS FOR OPTIMAL BRAKE PERFORMANCE. AVAILABLE WITH OPTIONAL BRAKE LIGHT SWITCH (SOLD SEPARATELY).

CLUTCH SLAVES FOR 5 AND 6 SPEED CABLE AND HYDRAULIC TRANSMISSIONS.



SMOOTH



FLUTED



PERFECT POLISH SHOW CHROME BLACK ANO Contrast Cut

POLISHED - \$329.95 CHROME, BLACK ANO & CONTRAST CUT - \$349.95



THE PM CLUTCH SLAVE IS PERFECTLY MATCHED TO OUR CONTOUR MASTER CYLINDER FOR OPTIMAL CLUTCH ACTION.

SWITCH HOUSINGS

CAN BUS



2011-2016 SOFTAIL MODELS, 2012-2016 DYNA MODELS AND 2014-2016 SPORTSTER MODELS.



CHROME & CONTRAST CUT - \$459.95/PAIR

PERFORMANCE MACHINE CAN BUS SWITCHES WERE DESIGNED TO REPLACE THE STOCK CONTROL HOUSINGS ON 2011-16 SOFTAIL, 2012-16 DYNA AND 2014-16 SPORTSTER MODELS. THE PM SWITCH HOUSINGS UTILIZE THE FACTORY H-D ELECTRONIC CONTROL MODULES WITH PM INTEGRATED ROCKER BUTTONS MARKED CLEARLY WITH FUNCTION SYMBOLS. PM CAN BUS CONTROLS MESH SEAMLESSLY WITH PM CONTOUR HAND CONTROLS AND ARE AVAILABLE IN CHROME AND CONTRAST CUT FINISHES.

FLH FOUR BUTTON

FLH FIVE BUTTON

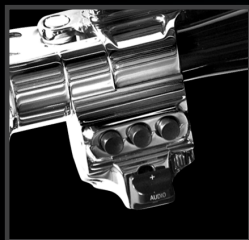
TOURING MODELS



*CAN BUS OPTIONS AVAILABLE

POLISH - \$299.95 CHROME, BLACK ANO - \$329.95

THE PM TOURING EDITION SWITCH HOUSINGS ALLOW THE USE OF PM CONTOUR CONTROLS WITHOUT SACRIFICING YOUR STOCK SWITCHES. AVAILABLE FOR USE WITH CAN BUS APPLICATIONS UTILIZING PM CAN BUS CONTROLLER FOR HYDRAULIC OR CABLE CLUTCH IN FOUR OR FIVE BUTTON CONFIGURATIONS.



3 BUTTON

1 BUTTON



CUSTOM APPLICATIONS, SOFTAIL, DYNA AND SPORTSTER MODELS.

PM'S BILLET ALUMINUM SWITCH HOUSINGS ARE A PERFECT COMPLIMENT TO THE PM CONTOUR MASTER CYLINDERS. THE SINGLE OR THREE BUTTON APPLICATIONS FEATURE HIGH QUALITY SWITCHES WITH 3/6" LEADS. SPACERS ARE ALSO OFFERED TO FILL THE GAP BETWEEN THE SWITCH HOUSING AND THE GRIP. PM FAT BAR ADAPTERS ARE DESIGNED TO ADAPT CONTOUR CONTROLS TO 1.25" BARS.



3 BUTTON - POLISH - \$199.95 CHROME, BLACK ANO - \$229.95 1 BUTTON - POLISH - \$129.95 CHROME, BLACK ANO - \$149.95



THROTTLE HOUSINGS



POLISHED - \$79.95
CHROME & BLACK ANO - \$89.95

PM CONTOUR THROTTLE HOUSINGS ARE THE FINISHING TOUCH TO THE HANDLEBAR SET UP. THROTTLE HOUSINGS ARE AVAILABLE IN SINGLE CABLE, DUAL CABLE, DUAL SNAP IN, AND ELECTRONIC THROTTLE.



CONTOUR BELT DRIVE

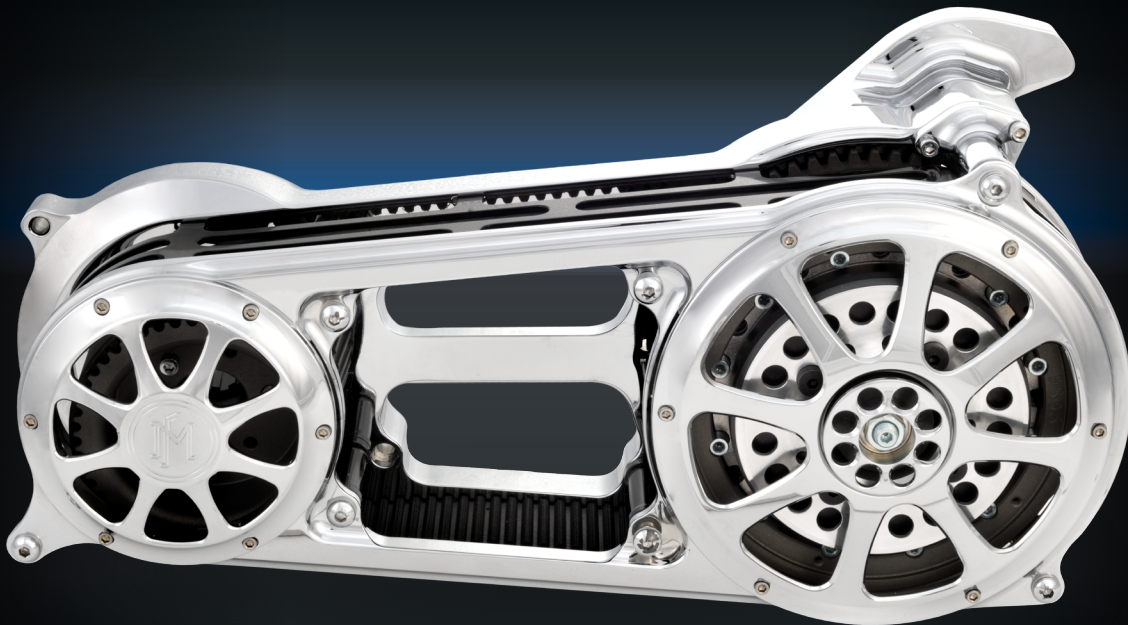
PM PHATAIL KITS 2008-2011 ROCKER
1991-2016 SOFTAIL 1990-2006 FLH
2006-2016 DYNA 2008-2016 FLH



SOFTAIL, DYNA & FLH - \$2799.95

PM PHATAIL & H-D ROCKER - \$2999.95

BY POPULAR DEMAND, WE HAVE UPDATED THE CHROME VERSION OF OUR PRIMARY TO FEATURE THE SAME MACHINED, OPEN WINDOWS AS THE CONTRAST CUT VERSION. SAME SUPERIOR PERFORMANCE WITH IMPROVED STYLING FOR YOUR MACHINE. ALREADY HAVE A PM CHROME PRIMARY? WE'VE CREATED A KIT COMPLETE WITH THE OPEN FACE YOU'LL NEED TO UPDATED YOUR EXISTING PRIMARY TO THE OPEN FACE STYLE FOR SOFTAIL AND DYNA APPLICATIONS.



PM PHATAIL WIDE TIRE KIT

PM PHATAIL KIT INCLUDES:

- WIDE SWINGARM AND REAR AXLE ASSEMBLY
- ONE PIECE FORMED STEEL FENDER AND BILLET ALUMINUM FENDER STRUTS (OPTIONAL RECESSED BILLET LICENSE PLATE FRAME)
- BILLET ALUMINUM PRIMARY SPACERS, GASKETS AND HARDWARE
- EXTENDED MAINSHAFT, FRONT MOTOR SPROCKET & FINAL DRIVE GEAR
- STARTER SHAFT EXTENSION AND ALL HARDWARE
- ALL NECESSARY HARDWARE, SPACERS AND GASKETS
- DETAILED INSTRUCTION SHEET WITH PHOTOS OF EACH STEP



2007, 2008-2016 STANDARD OR DRIVE-SIDE - \$2999.95 | WITH RECESSED LICENSE PLATE - \$3395.95

2007, 2008-2016 STANDARD WITH PM PRIMARY STANDARD/DRIVE-SIDE - \$2799.95 | WITH RECESSED LICENSE PLATE - \$3195.95

2000-2006 5-SPEED SOFTAIL STANDARD OR DRIVE-SIDE - \$2999.95 | WITH RECESSED LICENSE PLATE - \$3395.95

1991-1999 5-SPEED SOFTAIL STANDARD OR DRIVE-SIDE - \$3295.95 | WITH RECESSED LICENSE PLATE - \$3695.95

THE PM PHATAIL KIT IS A BOLT-ON KIT FOR 1991 AND NEWER SOFTTAILS THAT ALLOWS OUR 18" X 8.5" WHEEL TO REST COMFORTABLY IN THE CONFINES OF A BONE STOCK H-D SOFTTAIL FRAME! INCLUDES SWINGARM, FENDER, BILLET STRUTS, ALL NECESSARY TRANS PARTS AND DETAILED INSTRUCTIONS. AVAILABLE IN STANDARD BRAKE CONFIGURATION OR WITH PRE-WELDED TABS FOR THE PM DRIVE-SIDE BRAKE SYSTEM. PM PHATAIL KITS INCLUDE ALL OF THE COMPONENTS LISTED BELOW. WE STRONGLY RECOMMEND THE CONVERSION BE COMPLETED BY A QUALIFIED BIKE SHOP. CUSTOM SEATS CAN BE PURCHASED FROM CORBIN AND BITCHIN SEAT COMPANY. WILL NOT WORK WITH HARLEY FACTORY SIX SPEED OR FACTORY HYDRAULIC CLUTCH SLAVE ON 1991-2006 MODELS.



TRIKE FORGED WHEELS

FOR H-D TRIKES AND
SELECT TRIKE MFG MODELS.



WRATH



LUXE

PARAMOUNT

RIVIERA

TORQUE

HEATHEN

H-D MODELS (15x5.5, 18x5.5)

CHROME & CONTRAST CUT \$849.95
CONTRAST CUT PLATINUM \$899.95

SELECT TRIKE MFGS (15x7)

CHROME & CONTRAST CUT \$949.95
CONTRAST CUT PLATINUM \$999.95



PM TRIKE WHEELS ARE THE FIRST OF THEIR KIND TO BE MANUFACTURED FOR H-D TRIKE APPLICATIONS AND OTHER SELECT TRIKE KITS. PM'S DEDICATION TO INNOVATION HAS RESULTED IN A WHEEL THAT WILL GO UNRIVALED IN DESIGN AND FUNCTION. PM STARTS WITH A SPECIALLY DESIGNED REAR WHEEL BLANK THAT WAS DEVELOPED TO BE A PERFECT MATCH TO OUR FRONT FORGED MOTORCYCLE WHEELS. USING THIS EXCLUSIVE FORGING RATHER THAN A STOCK AUTOMOTIVE FORGING CREATES A MORE AESTHETICALLY APPEALING PACKAGE FOR YOUR THREE WHEELED RIDE. THE WHEEL CENTER IS FINISHED WITH A HUB CAP FEATURING A PM LOGO WITH MACHINED OPENINGS TO EXPOSE THE LUG NUTS.

TRIKE BRAKE SYSTEMS

2009-2013 STOCK H-D TRIKE MODELS.



STAGE I KIT \$1399.95

STAGE II KIT \$1999.95



PM ENGINEERS HAVE COMBINED OUR 4-PISTON CALIPER WITH THE INTEGRATED RACE TECHNOLOGY OF OUR REAR CONTOUR MASTER CYLINDER TO CREATE THE MOST INNOVATIVE BRAKE SYSTEM FOR 2009 TO 2013 STOCK H-D TRIKE APPLICATIONS. THE RESULT: OUR 4-PISTON CALIPERS PROVIDE MORE CLAMPING FORCE TO SLOW THE TRIKE DOWN WHILE THE REAR MASTER CYLINDER PROVIDES THE EXTRA FLUID TO THE CALIPERS. THE STAGE I KIT ELIMINATES BRAKE FADE AND DECREASES THE STOPPING DISTANCE DRAMATICALLY WITH LESS PEDAL EFFORT, TURNING THIS FUN MACHINE INTO A REAL PERFORMER. THE STAGE II KIT INCLUDES EVERYTHING IN THE STAGE I KIT, PLUS TWO BRACKETS TO ADAPT THE PM CALIPERS FOR TWO HEAVY DUTY 11.5" ROTORS. THE ADDITION OF THE PM STAINLESS ROTORS HAS ALL THE BENEFITS OF STAGE I AND FURTHER HELPS TO DECREASE STOPPING DISTANCE.



REPLACEMENT PARTS

REBUILD KIT FOR PM CALIPERS

CALIPER	PART #		CALIPER	PART #	
125X4R	0052-3002	\$9.00	162X2	0056-3002	\$9.00
125X4RSPH	0052-3002	\$9.00	137X4B	0053-3903	\$9.00
125X4SL	0052-3002	\$9.00	112X6B	0051-3901	\$9.00
125X4S	0052-3002	\$9.00	137X6	0053-3902	\$9.00
125X2	0052-3001	\$4.50	112X6RSB	0051-3902	\$4.50
Radial	0052-3002	\$9.00	Integrated	0053-3904	\$9.00

BRAKE PADS

PAD MFGR	COMPOUND	PART #		PAD MFGR	COMPOUND	PART #	
Caliper: 125X4R, 137X4B (Order 1 Pair)				Caliper: 125X2 (Order 1 Pair), 125X4S, 125X4SL (Order 2 Pairs)			
DP	Sintered	0052-1602DS	\$35.00	DP	Sintered	0052-1601DS	\$15.00
DP	Organic	0052-1602DR	\$27.95	DP	Organic	0052-1601DR	\$15.00
Caliper: Integrated Rear for Softtail (Order 1 Pair)				Caliper: 112X6B - (Order 1 Pair)			
DP	Sintered	0053-1608DS	\$39.95	DP	Sintered	0051-1602DS	\$39.95
Caliper: Radial Mount (Order 1 Set)				DP	Organic	0051-1602DR	\$39.95
DP	Sintered	0052-1606DS	\$39.95				

ANTI-RATTLE SPRINGS

DESCRIPTION	CALIPERS	PART #		DESCRIPTION	CALIPERS	PART #	
Anti-Rattle Spring	125X4R	0052-1801	\$2.70	Anti-Rattle Spring	112X6B	0051-1800	\$6.50
Anti-Rattle Spring	137X4B	0052-1801	\$2.70	Anti-Rattle Springs	162X2 (Order 2)	0056-1800	\$4.55
Anti-Rattle Spring	Integrated Rear	0053-1800	\$8.50				

CALIPER SHIM KITS

DESCRIPTION	CALIPERS	PART #		DESCRIPTION	CALIPERS	PART #	
5/16" Shims	125X2, 125X4S	0019-9000	\$3.50	3/8" Shims	125X4R, 125X4SL, 125X4RSPH, 137X4, 137X6, 112X6, 162X2	0019-9001	\$4.55
ASSEMBLY LUBRICANT				2000 up H-D			
Hydraulic Lubricant for Caliper Assembly Capsule				10mm Shims	137X4, 112X6	0019-9004	\$4.55

ANCHOR RODS & BALL ROD ENDS

DESCRIPTION	PART #		DESCRIPTION	PART #	
2" Rod Assembly - 5/16" Ball Rod Ends	0028-9802	\$55.00	12" Rod Assembly - 3/8" Ball Rod Ends	0028-9912	\$55.00
6" Rod Assembly - 5/16" Ball Rod Ends	0028-9806	\$55.00	14" Rod Assembly - 3/8" Ball Rod Ends	0028-9914	\$55.00
4" Rod Assembly - 3/8" Ball Rod Ends	0028-9904	\$55.00	3/8" x 3/8" - 24 Ball Rod Ends	0074-0001-CH	\$13.95
6" Rod Assembly - 3/8" Ball Rod Ends	0028-9906	\$55.00	1/4" x 1/4" - 28 Ball Rod Ends	0074-0003-CH	\$9.00
8" Rod Assembly - 3/8" Ball Rod Ends	0028-9908	\$55.00	5/16" x 5/16" - 24 Ball Rod Ends	0074-0004-CH	\$9.00
10" Rod Assembly - 3/8" Ball Rod Ends	0028-9910	\$55.00			

MASTER CYLINDER REBUILD KITS

DESCRIPTION	PART #		DESCRIPTION	PART #	
5/8" Bore Standard 12/96 and up	0060-3602	\$15.95	3/4" Bore Standard 12/96 and up	0060-3702	\$15.95
5/8" Bore Standard Pre- 6/96	0060-3603	\$45.00	3/4" Bore Standard Pre- 3/96	0060-3703	\$49.95
5/8" Bore Standard 6/96 - 11/96	0060-3604	\$29.95	3/4" Bore Standard 3/96 - 11/96	0060-3704	\$34.95
5/8" Bore Contour	0060-3605	\$15.95	Top Gasket for Contour Master	0060-1019	\$6.50
Top Gasket for Classic Master	0060-1010	\$3.95	9/16" Bore Contour	0060-3505	\$39.95
11/16" Classic Master Cylinder	0060-3900	\$34.50	11/16" Bore Contour	0060-3605	\$33.00

RUBBER REPLACEMENTS

DESCRIPTION	PART #		DESCRIPTION	PART #		DESCRIPTION	PART #	
Contour/Merc Grip (Order 2)	0063-1013M	\$10.00	Contour Peg (Big)	0035-9006	\$15.00	Rubber Wrapped Peg	0031-1087	\$5.00
Apex/Elite Grip (Order 2)	0063-1049M	\$10.00	Contour Pedal (Small)	0035-9007	\$9.50	Rubber Wrapped Pedal	0033-1084M	\$3.00
XL Grip (Order 2)	0063-1020	\$10.00	XLS Peg (Order 1 per Peg)	0031-1215M	\$10.00	Round Peg (Big)	0035-9010	\$9.50
XLS Grip (Order 1 per Grip)	0063-1160M	\$10.00	Apex/Elite Foot Peg	0031-1119M	\$10.00	Round Pedal (Small)	0035-9009	\$9.50
Overdrive Grip (Order 1 per Grip)	0063-1142M	\$10.00	Apex/Elite Shift Peg	0033-1084M	\$3.00	Overdrive Peg (Order 1 per Peg)	0031-1203M	\$10.00





BE
ONLY
ONE



PERFORMANCE MACHINE



OVER FOUR DECADES ◀ PERFORMANCE MACHINE ▶ & FORGING FORWARD

INDIVIDUALISM COMES STANDARD. CHARACTER IS BUILT. ICONS ARE REMEMBERED.
BE ONLY ONE.



BRAKES

ACCESSORIES

WHEELS

AIR CLEANERS

CONTROLS

800 • 479 • 4037 | PERFORMANCEMACHINE.COM | 6892 MARLIN CIRCLE • LA PALMA, CALIFORNIA 90623

